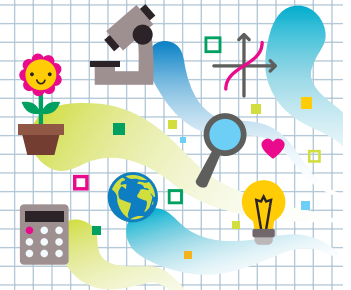




HEADS IN, HEARTS IN

Matching Shapes and Blocks

Instructions for Set-Up



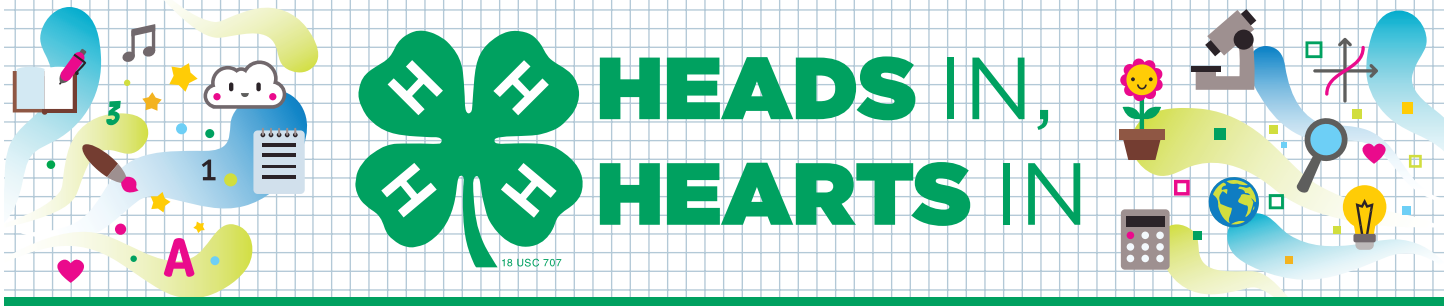
Supplies

- “Guide for Families” handout
- Clear plastic standup display (optional)
- Ten to fifteen 2- to 4-inch blocks in varying shapes and colors
- 4–6 large sheets of paper to make shape outline activity pages
- Crayons or markers in colors that match the blocks
- Additional crayons or markers in colors that match the blocks (optional)
- Extra paper (optional)
- Masking tape (optional)
- Display table

Activity Preparation

- ▶ Purchase or locate items on supply list.
- ▶ Print one copy of the “Guide for Families” handout. Laminate or place in a clear plastic standup display to allow participants to see it more readily.
- ▶ To create a shape outline activity page, trace each shaped block using a crayon or marker in the same color as the shape. You should end up with an outline of each shape on the sheet of paper. Make 4 to 6 of these pages. Arrange the shapes in a different way on each.
- ▶ Place blocks and shape outline activity pages on the table. Tape the activity pages down, if desired.
- ▶ Place additional blank pages and crayons or makers on the table (optional).





Matching Shapes and Blocks

Guide for Families

Learning Objectives

What you need to know:

Through block play, young children learn important math skills such as **geometry** and **spatial reasoning**. They also practice fine motor skills or build strong muscles in their hands, as well as develop hand-eye coordination. Spatial awareness, the building block to geometry, involves shapes, sizes, space, position, directions and movement. While playing with blocks, you can use words to help children learn math concepts, such as **above, below, in front of, next to, circle, rectangle, rhombus, edge, corner, face** and **side**.

What you will do and learn:

Children will work on geometry and spatial reasoning by selecting a block and finding the matching shape outline in the same color.

Instructions

1. Select a shape outline activity page.
2. Encourage the child to select a block and find the matching shape outline. Have them place the block on top of the outline.
3. While matching the blocks, talk to the child about color, shape and number of sides. Using positional words, such as **above, below** and **next to**, describe the location of each shape outline. (For example, the triangle is next to the circle.)
4. Older children may want to trace the blocks themselves using the crayons (or markers) and paper supplied.