

CREP Prioritization: Mapping Sediment Loading Risk in the Saginaw Bay Basin

Background

Michigan State University Extension (MSUE) is collaborating with the State of Michigan and local stakeholders to re-establish the Conservation Reserve Enhancement Program (CREP) in Michigan. To aid in prioritizing lands eligible for CREP enrollment, the Institute of Water Research (IWR) at MSU developed township-scale maps of sediment loading risk for the Saginaw Bay basin. This book organizes those maps at the township scale.

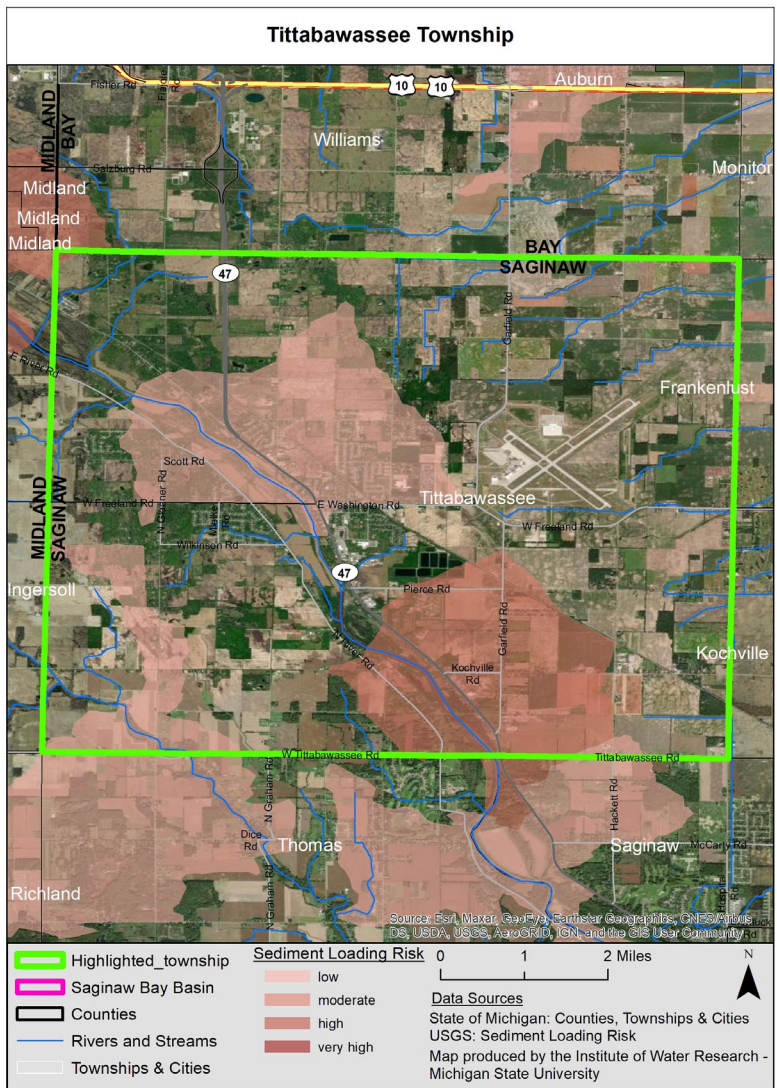
Data

The maps are based upon data from the United States Geological Survey's (USGS) SPATIally Referenced Regression On Watershed attributes (SPARROW) model*. The model uses observations, land use characteristics, and statistical relationships, among other variables, to estimate pollutant loads to streams and rivers. The data in this map book represents incremental sediment load contribution for each small catchment in the basin (see image at right), i.e. the amount of sediment load that originated in a particular area (not the total, accumulated amount moving through the stream in that area).

Contacts

Please direct questions about MSUE's project to:
Sarah Fronczak
 Environmental Management Educator
 Michigan State University Extension
froncz3@msu.edu

Please use the URL below to learn more about the SPARROW model, and direct questions about the maps to:
Glenn O'Neil
 Environmental Scientist
 Institute of Water Research - Michigan State University
oneilg@msu.edu



* <https://www.sciencebase.gov/catalog/item/5cbf5150e4b09b8c0b700df3>

Table of Contents

Alabaster Township	3
Au Sable Township	4
Baldwin Township	5
Burleigh Township	6
City of East Tawas	7
Grant Township	8
Oscoda Township	9
Plainfield Township	10
Reno Township	11
Sherman Township	12
Tawas Township	13
City of Tawas City	14
City of Whittemore	15
Wilber Township	16

Alabaster Township

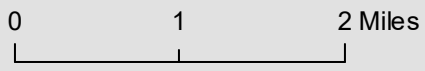


Source: Esri, Maxar, GeoEye, Earthstar Geographics, CNES/Airbus DS, USDA, USGS, AeroGRID, IGN, and the GIS UserCommunity

- Alabaster Township
- Saginaw Bay Basin
- Counties
- Rivers and Streams
- Townships & Cities

Sediment Loading Risk

- low
- moderate
- high
- very high



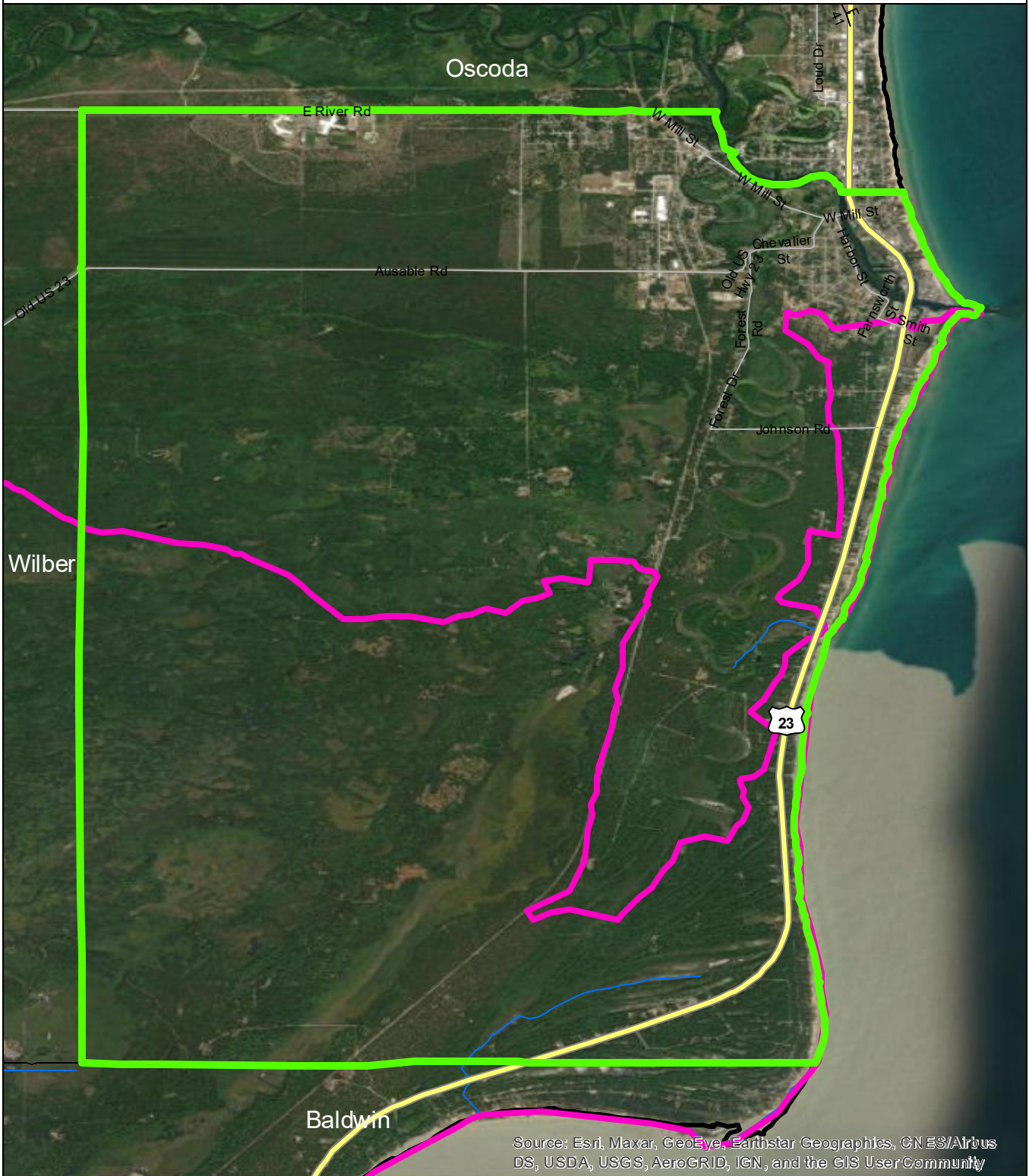
Data Sources

State of Michigan: Counties, Townships & Cities
 USGS: Sediment Loading Risk

Map produced by the Institute of Water Research - Michigan State University



Au Sable Township



Source: Esri, Maxar, GeoEye, Earthstar Geographics, CNES/Airbus DS, USDA, USGS, AeroGRID, IGN, and the GIS User Community

- Au Sable Township
- Saginaw Bay Basin
- Counties
- Rivers and Streams
- Townships & Cities

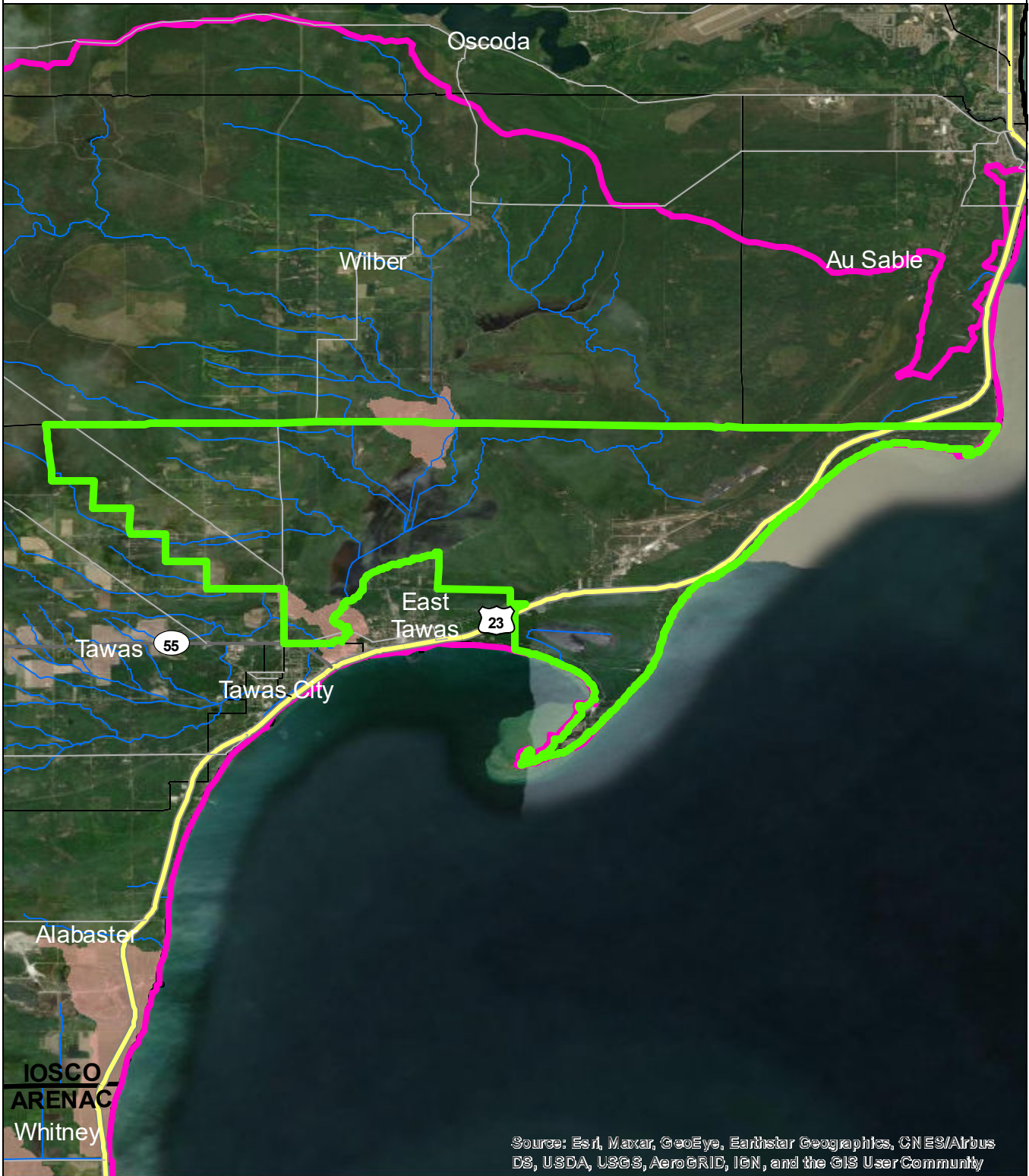
- Sediment Loading Risk**
- low
 - moderate
 - high
 - very high



Data Sources

State of Michigan: Counties, Townships & Cities
 USGS: Sediment Loading Risk
 Map produced by the Institute of Water Research - Michigan State University

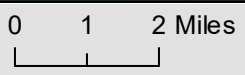
Baldwin Township



Source: Esri, Maxar, GeoEye, Earthstar Geographics, CNES/Airbus DS, USDA, USGS, AeroGRID, IGN, and the GIS User Community

- Baldwin Township
- Saginaw Bay Basin
- Counties
- Rivers and Streams
- Townships & Cities

- Sediment Loading Risk**
- low
 - moderate
 - high
 - very high



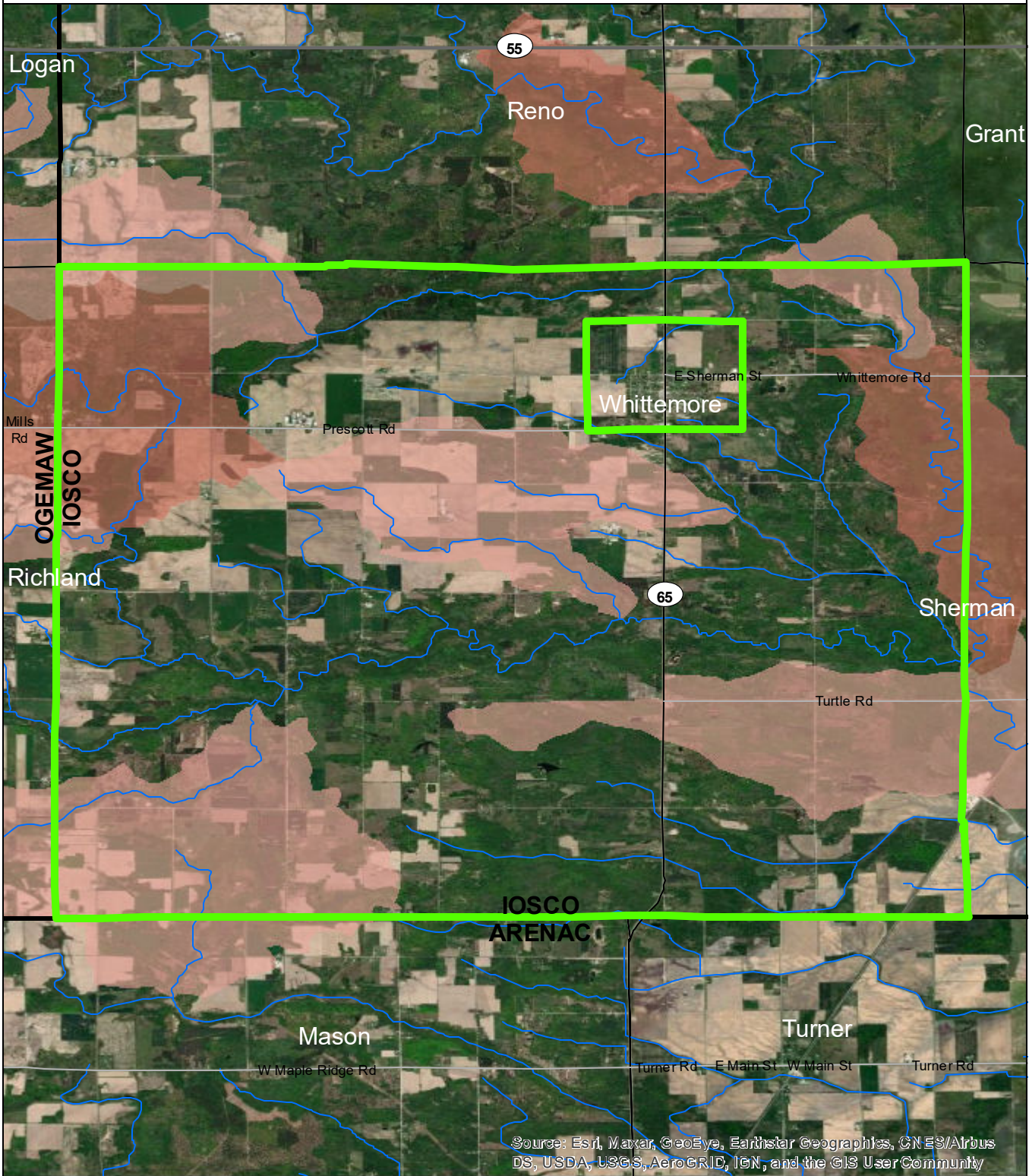
Data Sources

State of Michigan: Counties, Townships & Cities
 USGS: Sediment Loading Risk

Map produced by the Institute of Water Research - Michigan State University



Burleigh Township

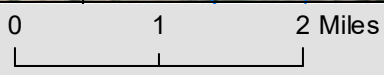


Source: Esri, Maxar, GeoEye, Earthstar Geographics, CNES/Airbus DS, USDA, USGS, AeroGRID, IGN, and the GIS User Community

- Burleigh Township
- Saginaw Bay Basin
- Counties
- Rivers and Streams
- Townships & Cities

Sediment Loading Risk

- low
- moderate
- high
- very high



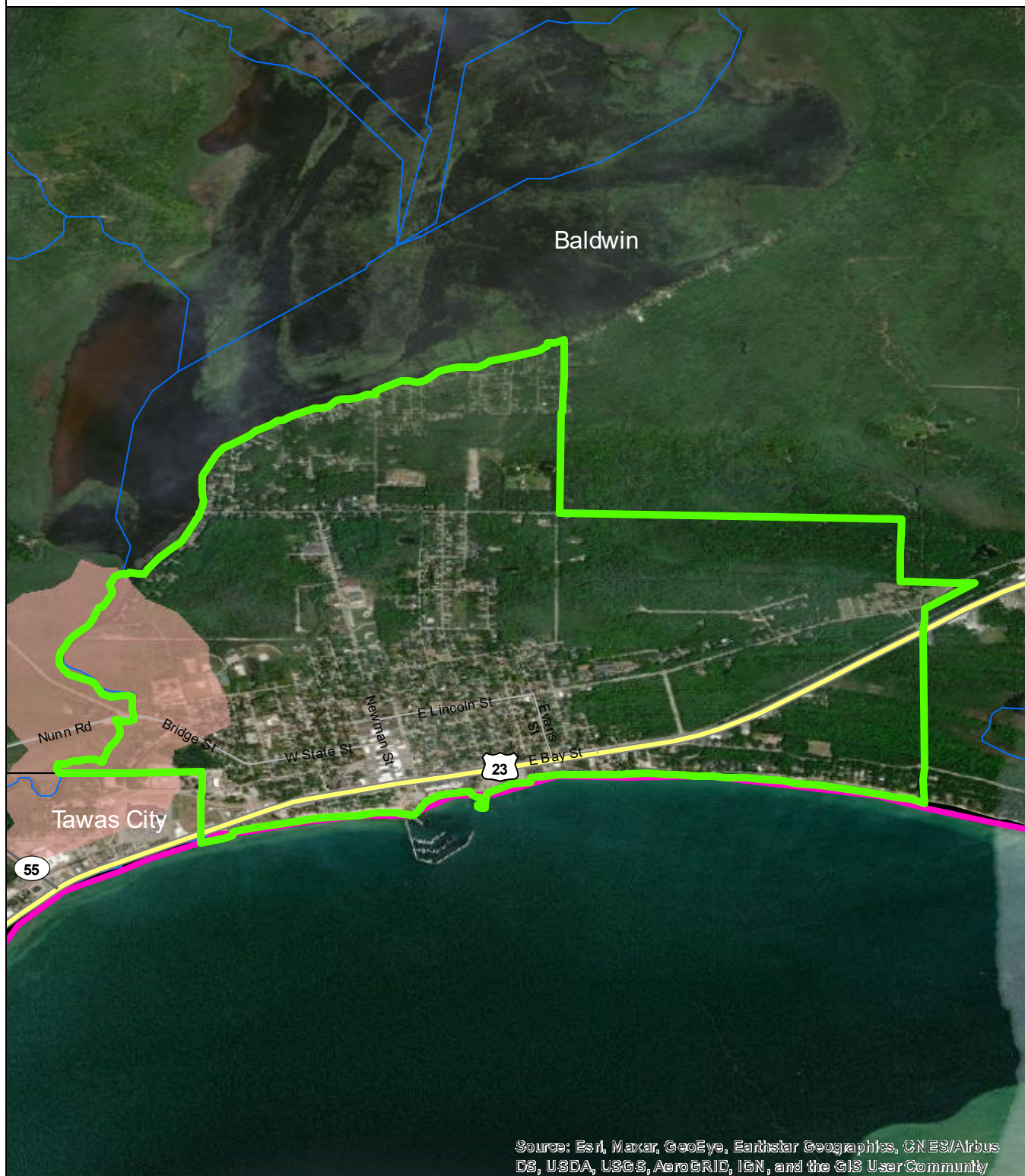
Data Sources

State of Michigan: Counties, Townships & Cities
 USGS: Sediment Loading Risk

Map produced by the Institute of Water Research - Michigan State University



City of East Tawas

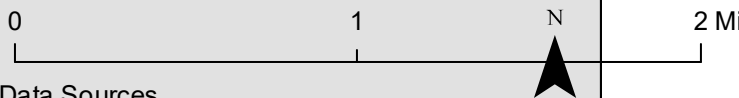


Source: Esri, Maxar, GeoEye, Earthstar Geographics, CN ES/Airbus DS, USDA, USGS, AeroGRID, IGN, and the GIS User Community

- City of East Tawas
- Saginaw Bay Basin
- Counties
- Rivers and Streams
- Townships & Cities

Sediment Loading Risk

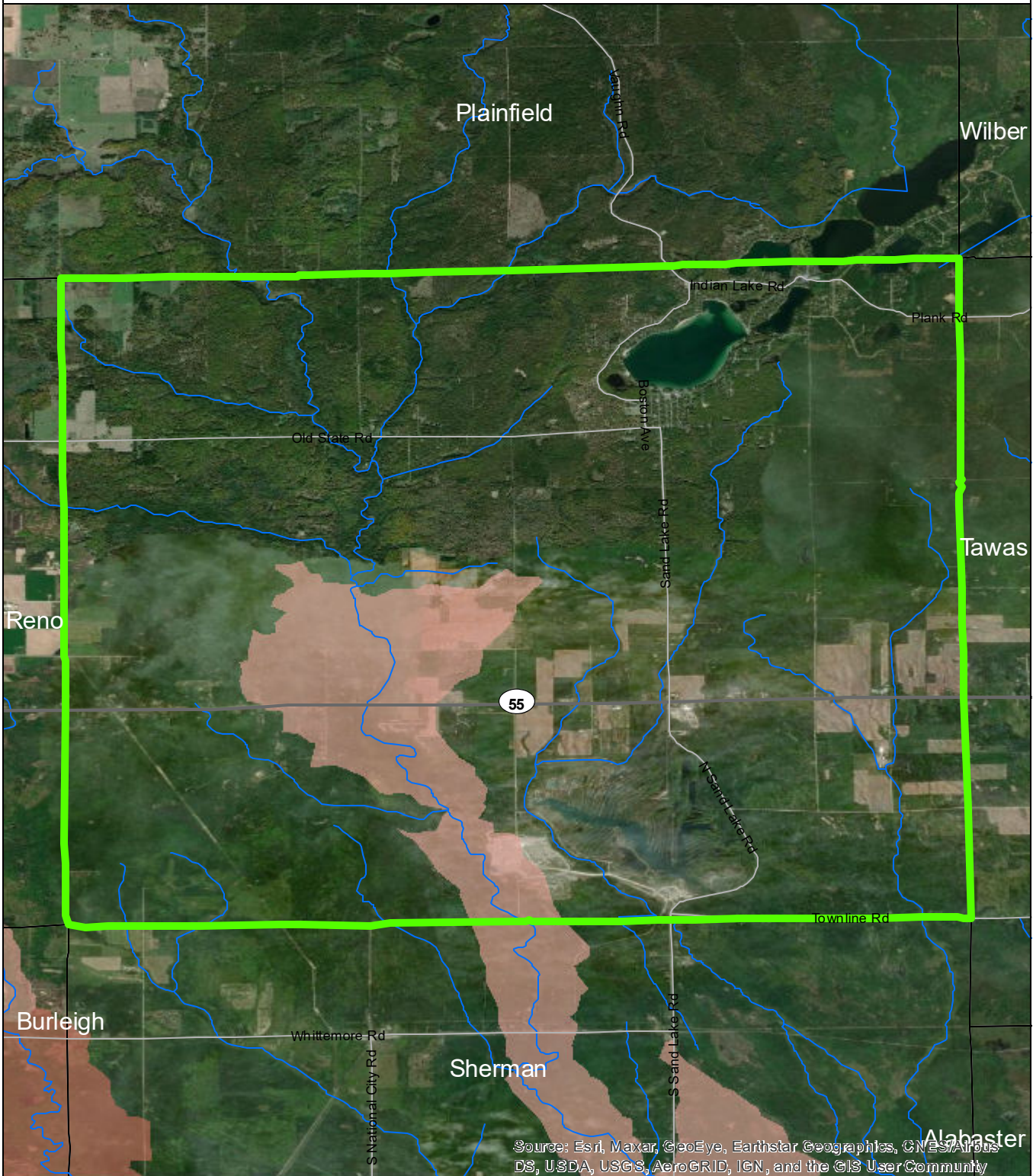
- low
- moderate
- high
- very high



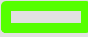


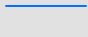

Data Sources

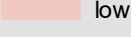
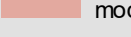
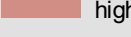

State of Michigan: Counties, Townships & Cities
 USGS: Sediment Loading Risk
 Map produced by the Institute of Water Research - Michigan State University

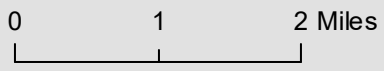
Grant Township



Source: Esri, Maxar, GeoEye, Earthstar Geographics, CNES/Airbus DS, USDA, USGS, AeroGRID, IGN, and the GIS User Community

-  Grant Township
-  Saginaw Bay Basin
-  Counties
-  Rivers and Streams
-  Townships & Cities

- Sediment Loading Risk**
-  low
 -  moderate
 -  high
 -  very high

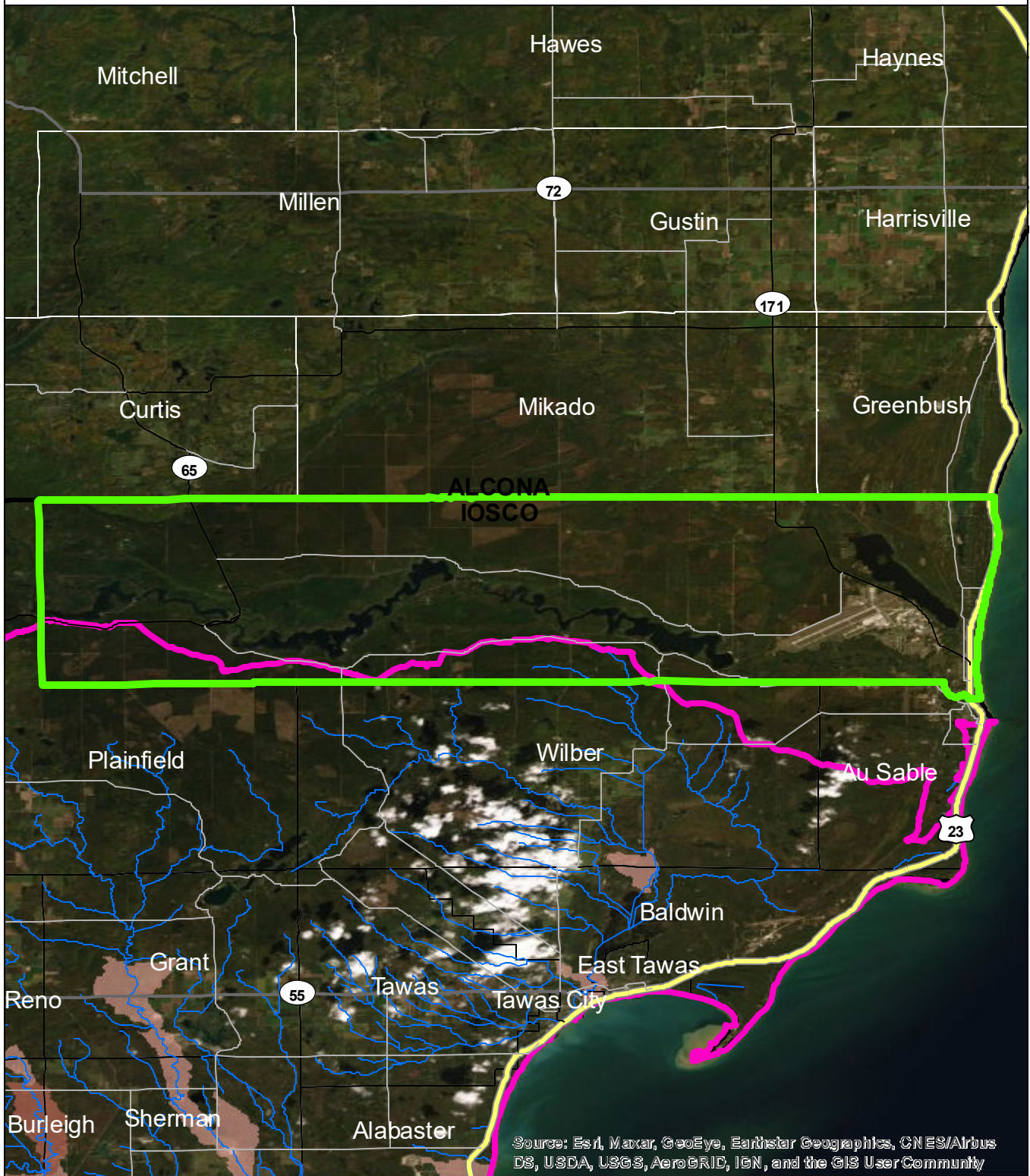


Data Sources

State of Michigan: Counties, Townships & Cities
 USGS: Sediment Loading Risk
 Map produced by the Institute of Water Research - Michigan State University



Oscoda Township



Source: Esri, Maxar, GeoEye, Earthstar Geographics, CNES/Airbus DS, USDA, USGS, AeroGRID, IGN, and the GIS User Community

- Oscoda Township
- Saginaw Bay Basin
- Counties
- Rivers and Streams
- Townships & Cities

Sediment Loading Risk

	low
	moderate
	high
	very high

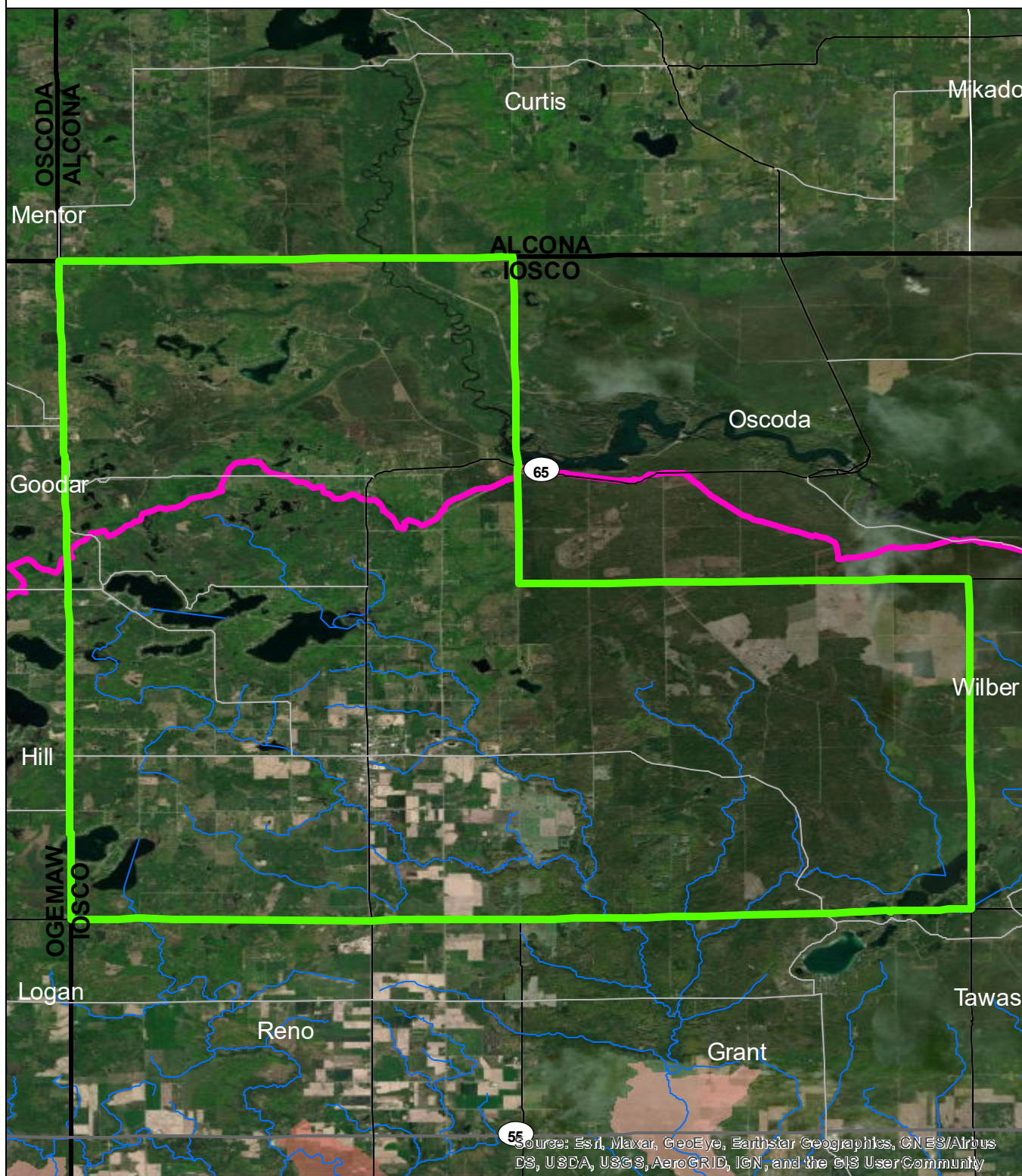
0 1 2 Miles

Data Sources

State of Michigan: Counties, Townships & Cities
 USGS: Sediment Loading Risk

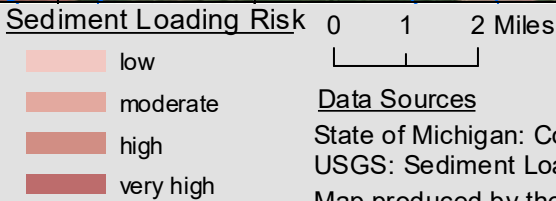
Map produced by the Institute of Water Research - Michigan State University

Plainfield Township



Source: Esri, Maxar, GeoEye, Earthstar Geographics, CNES/Airbus DS, USDA, USGS, AeroGRID, IGN, and the GIS User Community

- Plainfield Township
- Saginaw Bay Basin
- Counties
- Rivers and Streams
- Townships & Cities

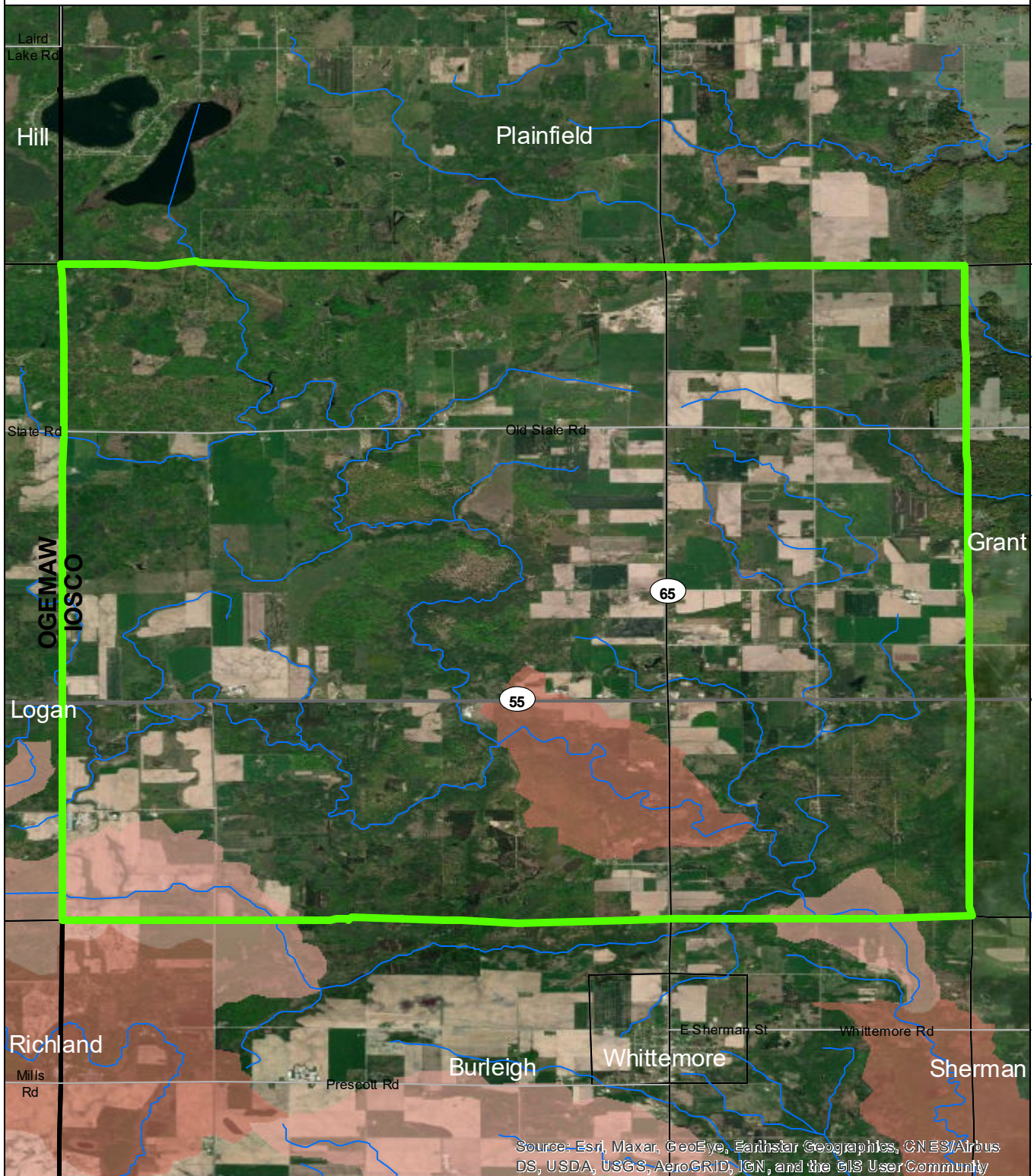


0 1 2 Miles

Data Sources
 State of Michigan: Counties, Townships & Cities
 USGS: Sediment Loading Risk
 Map produced by the Institute of Water Research - Michigan State University



Reno Township

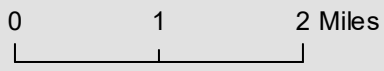


Source: Esri, Maxar, GeoEye, Earthstar Geographics, CNES/Airbus DS, USDA, USGS, AeroGRID, IGN, and the GIS User Community

- Reno Township
- Saginaw Bay Basin
- Counties
- Rivers and Streams
- Townships & Cities

Sediment Loading Risk

- low
- moderate
- high
- very high



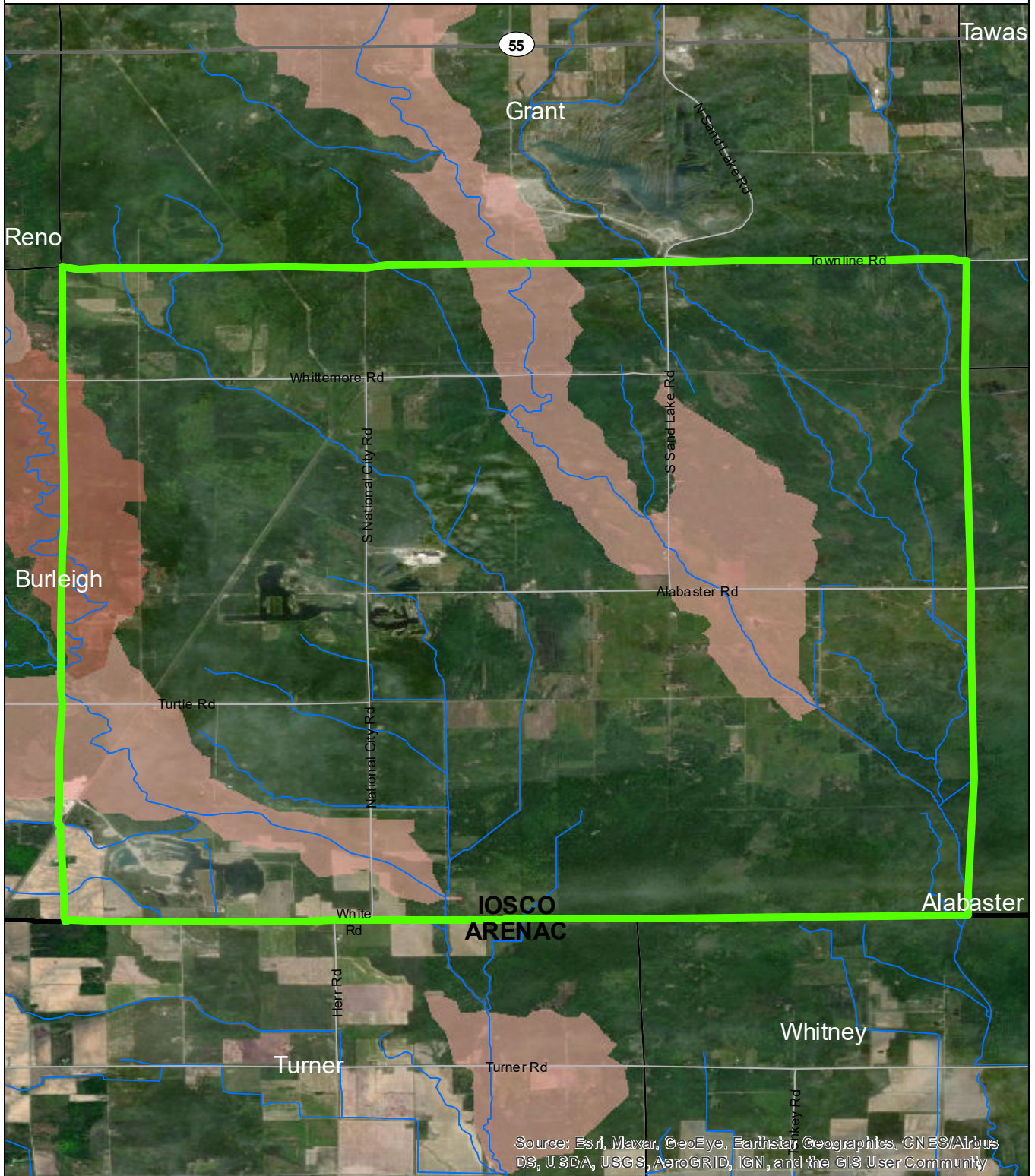
Data Sources

State of Michigan: Counties, Townships & Cities
 USGS: Sediment Loading Risk

Map produced by the Institute of Water Research - Michigan State University



Sherman Township

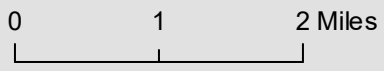


Source: Esri, Maxar, GeoEye, Earthstar Geographics, CNES/Airbus DS, USDA, USGS, AeroGRID, IGN, and the GIS User Community

- Sherman Township
- Saginaw Bay Basin
- Counties
- Rivers and Streams
- Townships & Cities

Sediment Loading Risk

- low
- moderate
- high
- very high



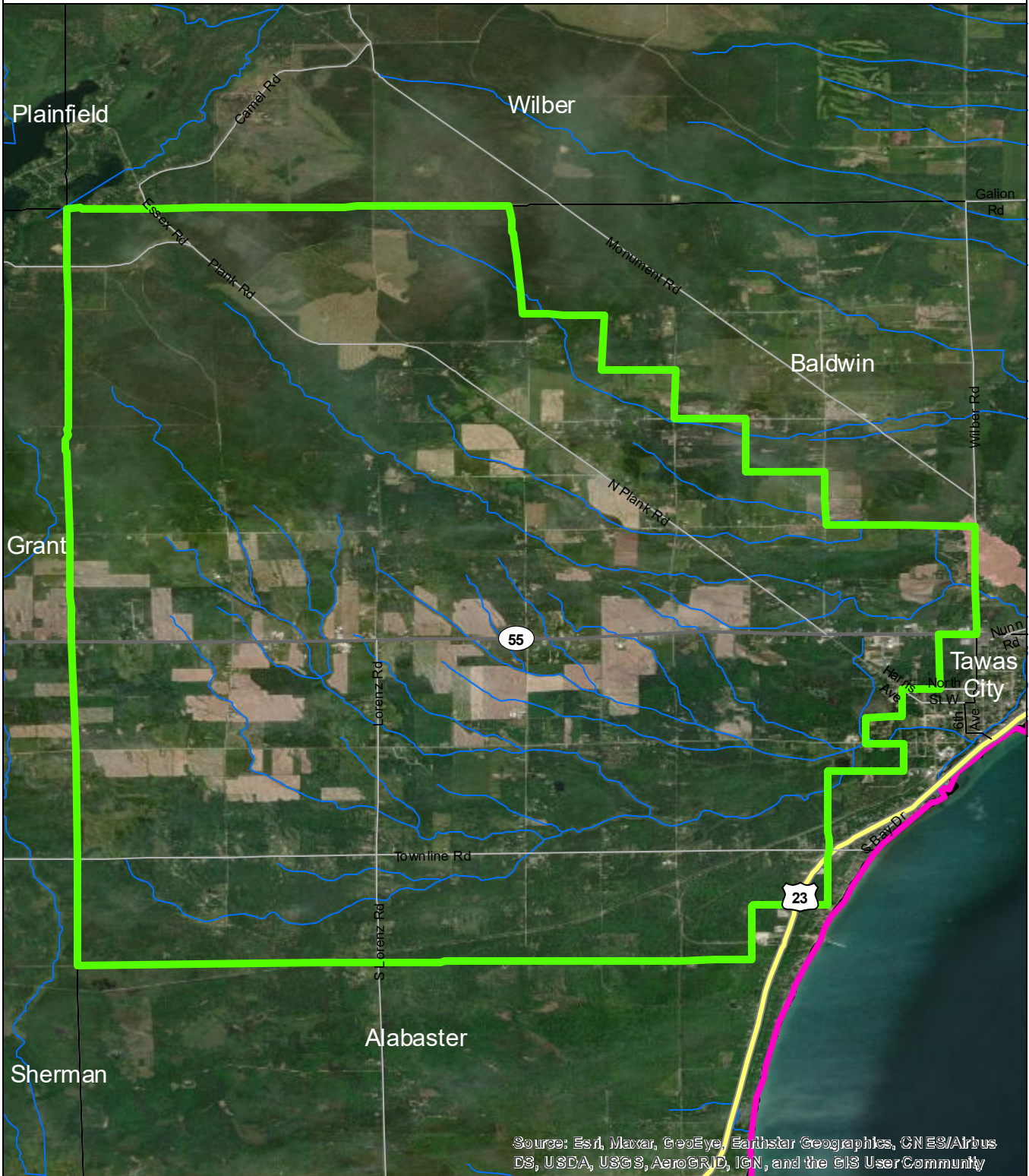
Data Sources

State of Michigan: Counties, Townships & Cities
 USGS: Sediment Loading Risk

Map produced by the Institute of Water Research - Michigan State University



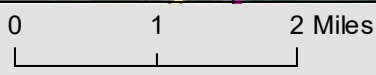
Tawas Township



Source: Esri, Maxar, GeoEye, Earthstar Geographics, CNES/Airbus DS, USDA, USGS, AeroGRID, IGN, and the GIS UserCommunity

- Tawas Township
- Saginaw Bay Basin
- Counties
- Rivers and Streams
- Townships & Cities

- Sediment Loading Risk**
- low
 - moderate
 - high
 - very high

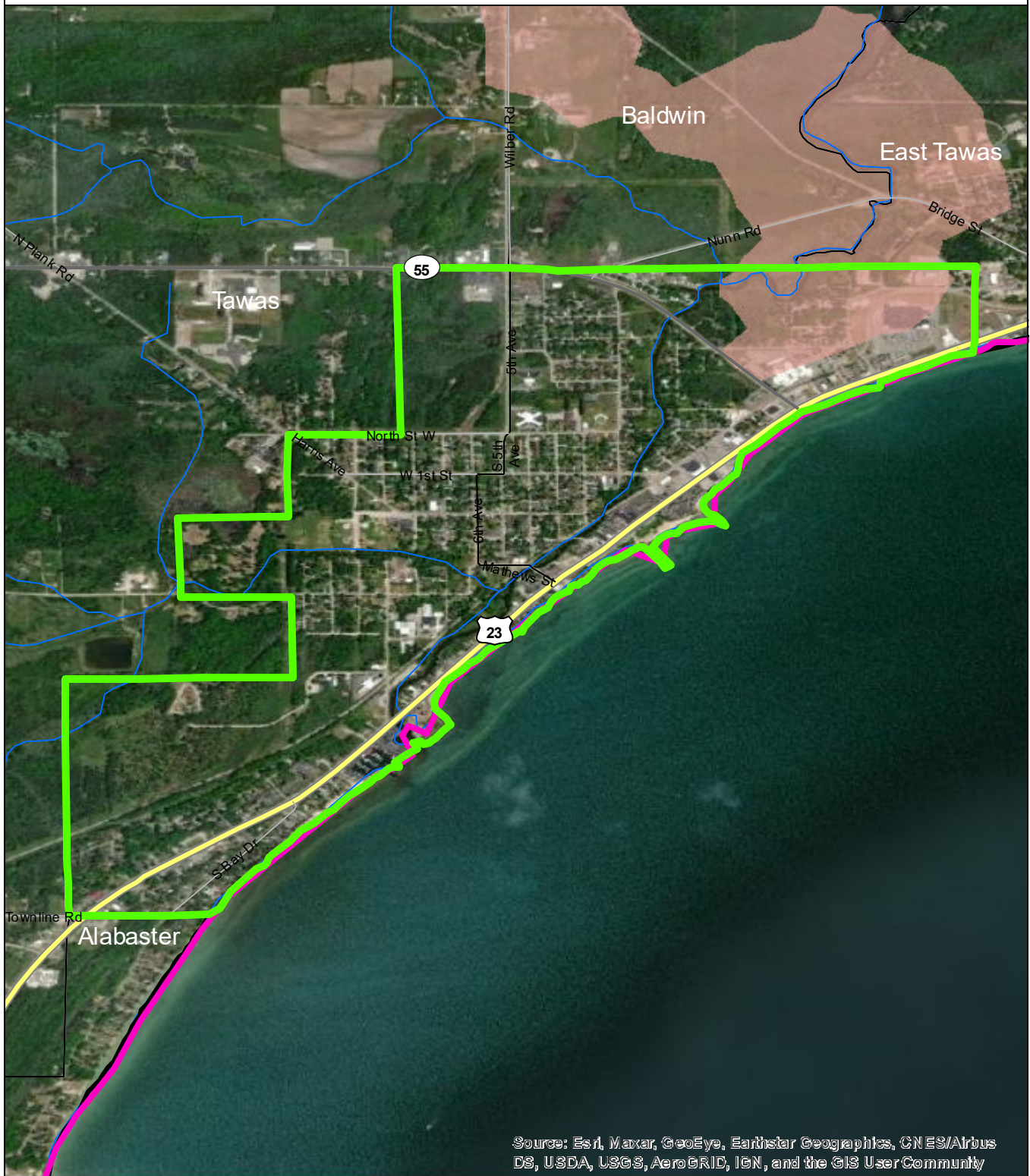


Data Sources

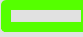

State of Michigan: Counties, Townships & Cities
 USGS: Sediment Loading Risk
 Map produced by the Institute of Water Research - Michigan State University




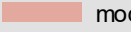
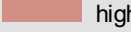

City of Tawas City

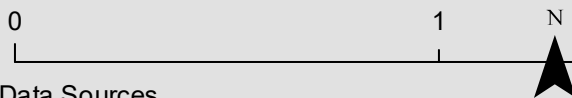


Source: Esri, Maxar, GeoEye, Earthstar Geographics, CNES/Airbus DS, USDA, USGS, AeroGRID, IGN, and the GIS User Community

-  City of Tawas City
-  Saginaw Bay Basin
-  Counties
-  Rivers and Streams
-  Townships & Cities

Sediment Loading Risk

-  low
-  moderate
-  high
-  very high

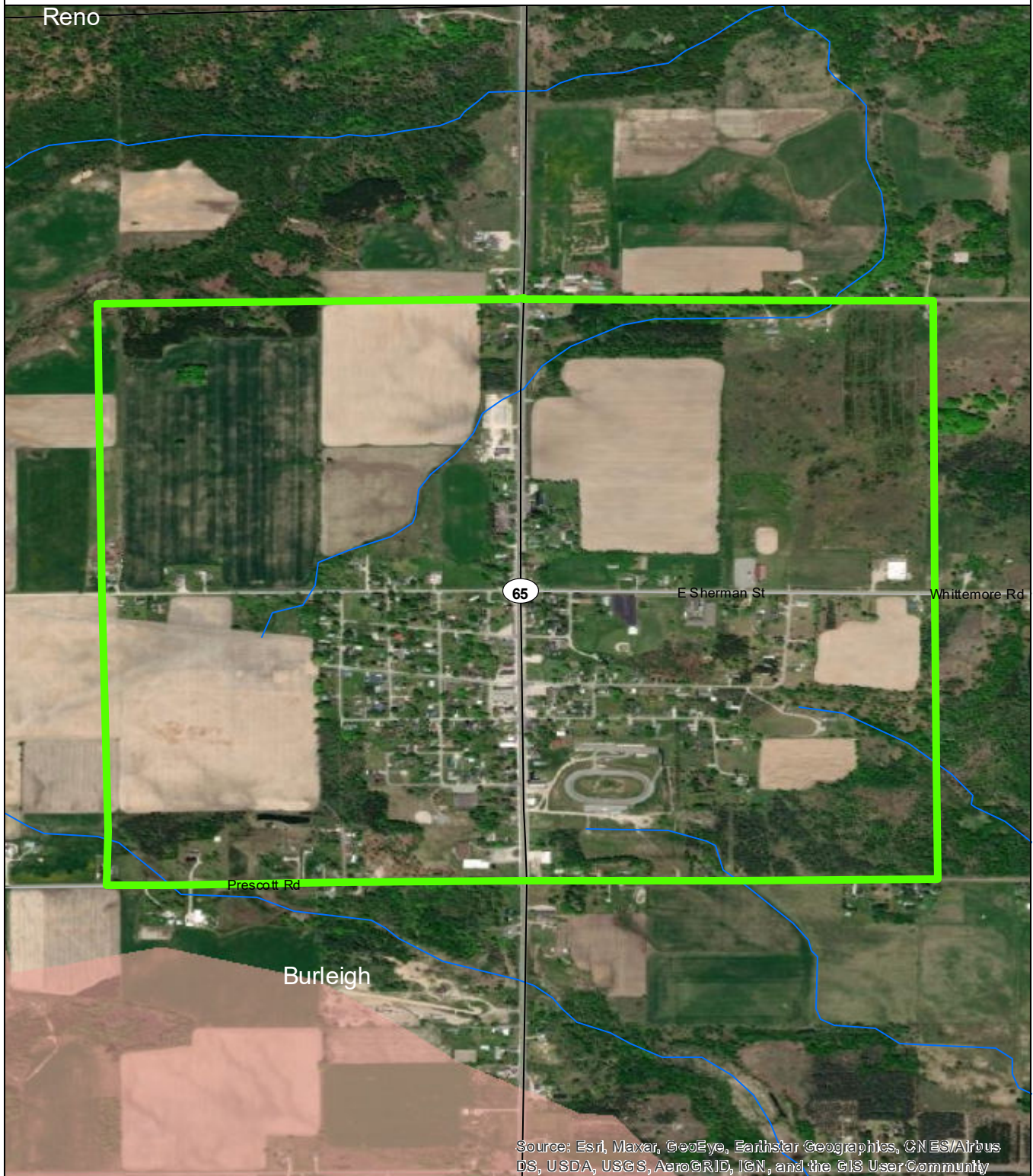


Data Sources

State of Michigan: Counties, Townships & Cities
 USGS: Sediment Loading Risk

Map produced by the Institute of Water Research - Michigan State University

City of Whittemore

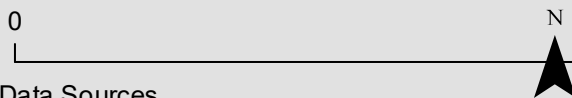


Source: Esri, Maxar, GeoEye, Earthstar Geographics, CNES/Airbus DS, USDA, USGS, AeroGRID, IGN, and the GIS User Community

- City of Whittemore
- Saginaw Bay Basin
- Counties
- Rivers and Streams
- Townships & Cities

Sediment Loading Risk

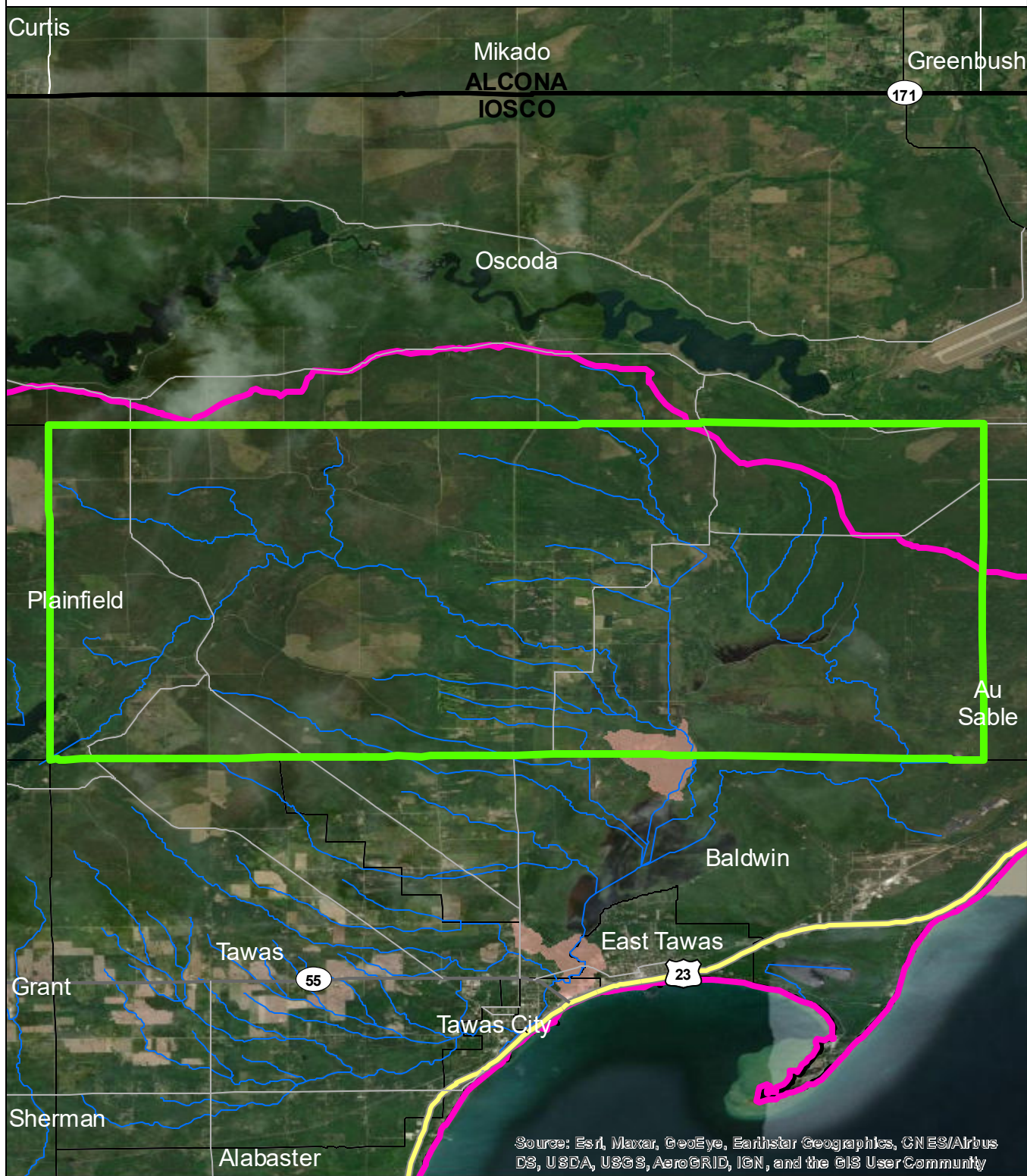
- low
- moderate
- high
- very high



Data Sources

State of Michigan: Counties, Townships & Cities
 USGS: Sediment Loading Risk
 Map produced by the Institute of Water Research - Michigan State University

Wilber Township



Source: Esri, Maxar, GeoEye, Earthstar Geographics, CNES/Airbus DS, USDA, USGS, AeroGRID, IGN, and the GIS UserCommunity

- Wilber Township
- Saginaw Bay Basin
- Counties
- Rivers and Streams
- Townships & Cities

Sediment Loading Risk

	low
	moderate
	high
	very high

0 1 2 Miles

Data Sources
 State of Michigan: Counties, Townships & Cities
 USGS: Sediment Loading Risk

Map produced by the Institute of Water Research - Michigan State University