



NINE COUNTRIES CONTAIN 90% OF AFRICA'S UNUTILIZED ARABLE LAND

Country	Non-forested unutilized land (million ha)	Proportion	Cumulative proportion
DRC	84.8	46.5%	46.5%
Angola	18.9	10.4%	56.9%
Congo	12.9	7.1%	63.9%
Zambia	10.8	5.9%	69.9%
Cameroon	10.5	5.7%	75.6%
Mozambique	9.0	4.9%	80.5%
CAR	7.1	3.9%	84.4%
Gabon	6.5	3.6%	88.0%
Sudan	5.8	3.2%	91.2%
Rest of Africa (n=45)		8.8%	100.0%

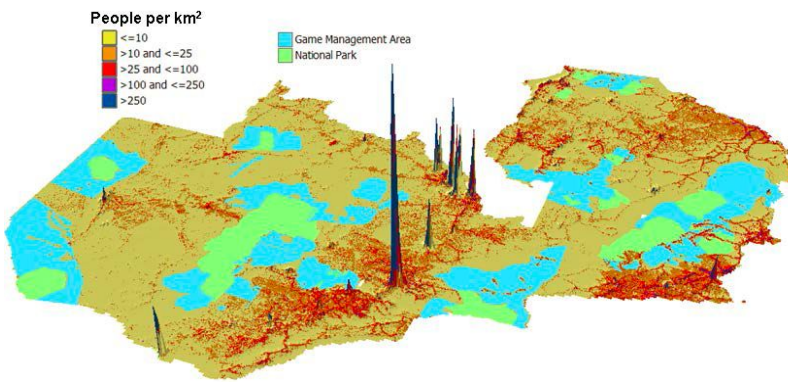
Source: Jayne et al. 2014 (JIA).

Note: Unutilized land is defined as land under 25 persons per square kilometer

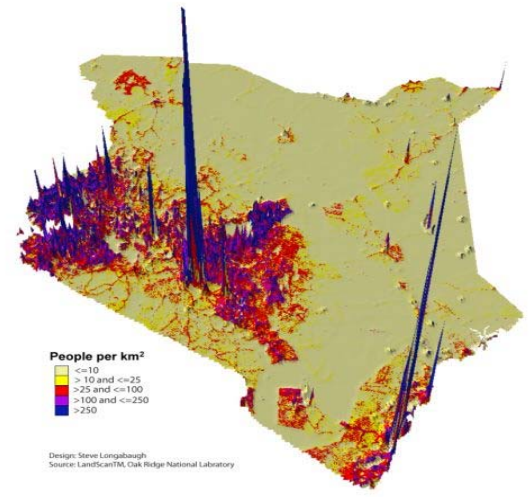


76% OF THE RURAL POPULATION RESIDES IN 10% OF THE RURAL LAND AREA

Zambia



Kenya

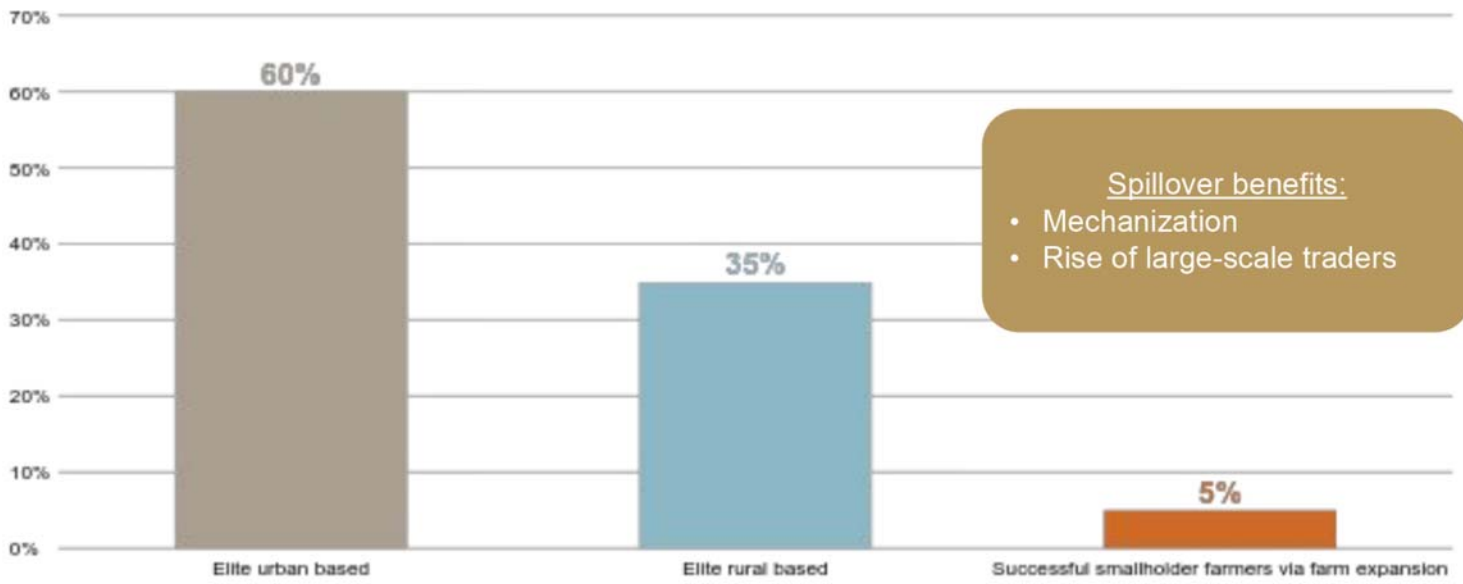




RIISING INEQUALITY IN FARMLAND DISTRIBUTION

Country	Period	Movement in Gini coefficient
Ghana Cultivated area, GLSS	1992 → 2013	0.54 → 0.70
Kenya Cultivated area, KIHBS	1994 → 2006	0.51 → 0.55
Tanzania Landholdings, LSMS	2008 → 2012	0.63 → 0.69
Zambia Landholdings, CFS	2001 → 2012	0.42 → 0.49

RISE OF THE MEDIUM-SCALE FARMERS



CHANGES IN FARM STRUCTURE IN TANZANIA (2008-2012), LSMS/NATIONAL PANEL SURVEYS

Farm size	Number of farms (% of total)		% growth in number of farms between initial and latest year	% of total operated land on farms between 0-100 ha		
	2008	2012		2008	2012	
0 – 5 ha	5,454,961 (92.8)	6,151,035 (91.4)	12.8	62.4	56.3	-6.1%
5 – 10 ha	300,511 (5.1)	406,947 (6.0)	35.4	15.9	18.0	+6.1%
10 – 20 ha	77,668 (1.3)	109,960 (1.6)	41.6	7.9	9.7	
20 – 100 ha	45,700 (0.7)	64,588 (0.9)	41.3	13.8	16.0	
Total	5,878,840 (100%)	6,732,530 (100%)	14.5	100.0	100.0	


CHANGES IN FARM STRUCTURE IN GHANA (1992-2013)

Ghana	Number of farms		% growth in number of farms	% of total cultivated area	
	1992	2013		1992	2013
0-2 ha	1,458,540	1,582,034	8.5	25.1	14.2
2-5 ha	578,890	998,651	72.5	35.6	31.3
5-10 ha	116,800	320,411	174.3	17.2	22.8
10-20 ha	38,690	117,722	204.3	11.0	16.1
20-100 ha	18,980	37,421	97.2	11.1	12.2
>100 ha	–	1,740	-	–	3.5
Total	2,211,900	3,057,978	38.3	100	100

51.1%

Source: Ghana GLSS Surveys, 1992, 2013, Jayne et al., 2016, using data from Ghana GLSS Surveys I and IV.

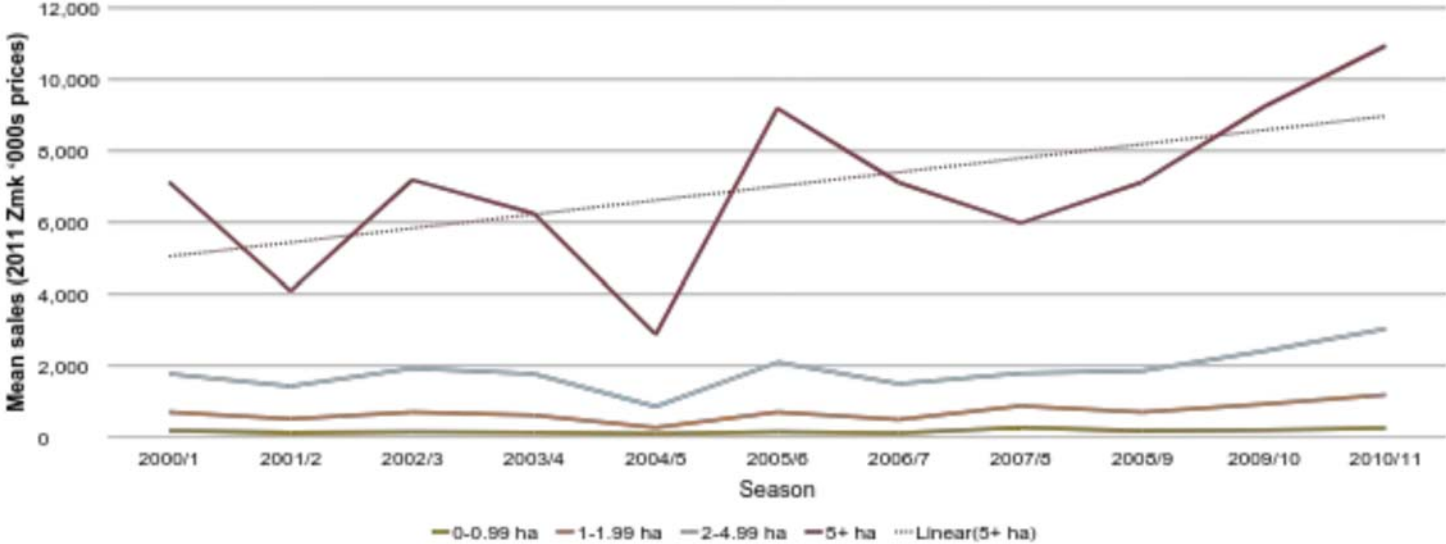
CHANGES IN FARM STRUCTURE IN ZAMBIA (2001-2012)

Farm size category	Number of farms		% growth in number of farms	% of total cultivated area	
	2001	2012		2001	2012
0 – 2 ha	638,118	748,771	17.3	34.1	16.2
2 – 5 ha	159,039	418,544	163.2	45	31.7
5 – 10 ha	20,832	165,129	692.6	14.3	25.0
10 – 20 ha	2,352	53,454	2272.7	6.6	15.0
20 – 100 ha	--	13,839		--	12.1
Total	820,341	1,399,737		100	100

} 52.1%

Source: Zambia MAL Crop Forecast Surveys, 2001 and 2012

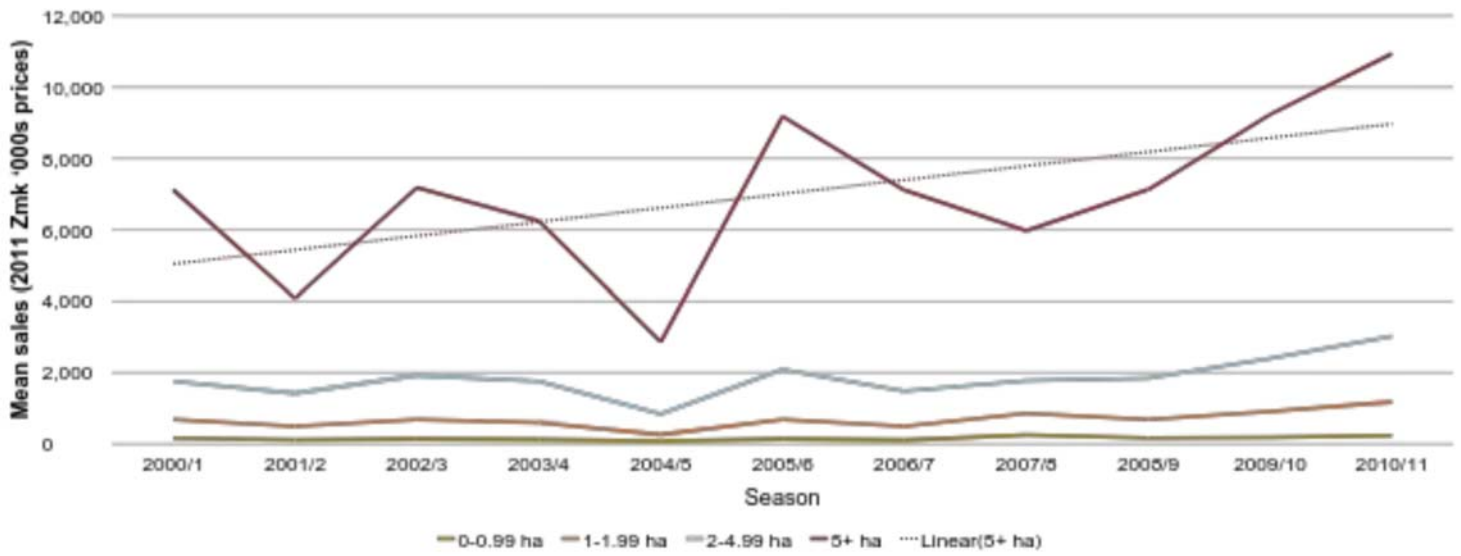
CROP SALES BY FARM SIZE, ZAMBIA



Source: MACO CFS 2000/1 to 2010/11 and authors' computations

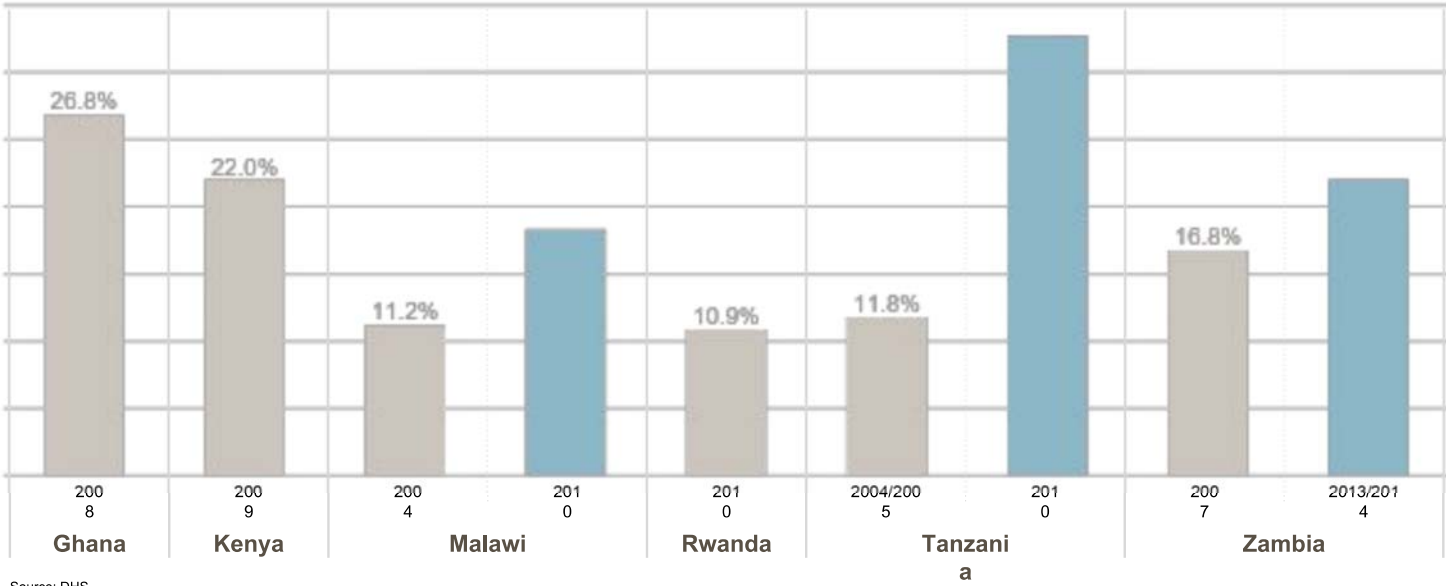
CROP SALES BY FARM SIZE, ZAMBIA

Largest smallholder farms (9%) consistently doing better



Source: MACO CFS 2000/1 to 2010/11 and authors' computations

% OF NATIONAL LANDHOLDINGS HELD BY URBAN HOUSEHOLDS



Source: DHS

TYPE 1: URBAN-BASED INVESTOR FARMER

	Mode of entry to medium-scale farming status: acquire farm using non-farm income	
	Zambia	Kenya
	(n=164)	(n=180)
% of cases	58	60
% men	91.4	80
Year of birth	1960	1947
Years of education of head	11	12.7
Have held a job other than farmer (%)	100	83.3
Formerly /currently employed by the public sector (%)	59.6	56.7
Current landholding size (ha)	74.9	50.1
% of land currently under cultivation	24.7	46.6
Decade when land was acquired		
1969 or earlier	1.1	6
1970-79	5.1	18
1980-89	7.4	20
1990-99	23.8	32
2000 or later	63.4	25