

[Back to identifying nursery weeds.](#)

Dandelion

Taraxacum officinale Weber in Wiggers

Life cycle

Rosette-forming simple perennial.

Leaves

All leaves originate from a basal rosette. Leaves are oblong to spatula-shaped, ranging from 2 to 10 inches long with deep, backward-pointing lobes. Leaves remain green year round and exude a milky sap when damaged.

Stems

Vegetative stems are not visible aboveground. Forms a deep, thick taproot.



Dandelion plant.

Asteraceae (Aster family)

Dandelion *continued*

Flowers and fruit

Bright yellow, solitary flower heads consisting of only ray flowers are 1 to 2 inches wide and found at the ends of unbranched, hollow, leafless flowering stalks. The seed is enclosed in a single-seeded, wind-disseminated fruit that forms in a globe-shaped collection.

Reproduction

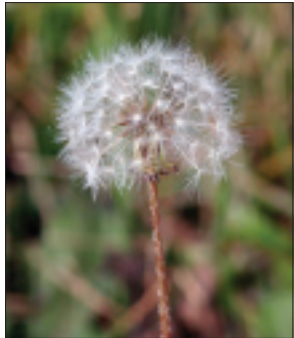
Seeds and new shoots from a taproot.



Dandelion seedling.



Yellow flower head of dandelion.



Mature dandelion seed head.

Asteraceae (Aster family)