



# Poultry - Study Guide (2021 Test)



# Question 1



What breed is this?

A. Orpington

B. Rhode Island Red

C. Leg Horn

D. Wyandotte



## Question 2



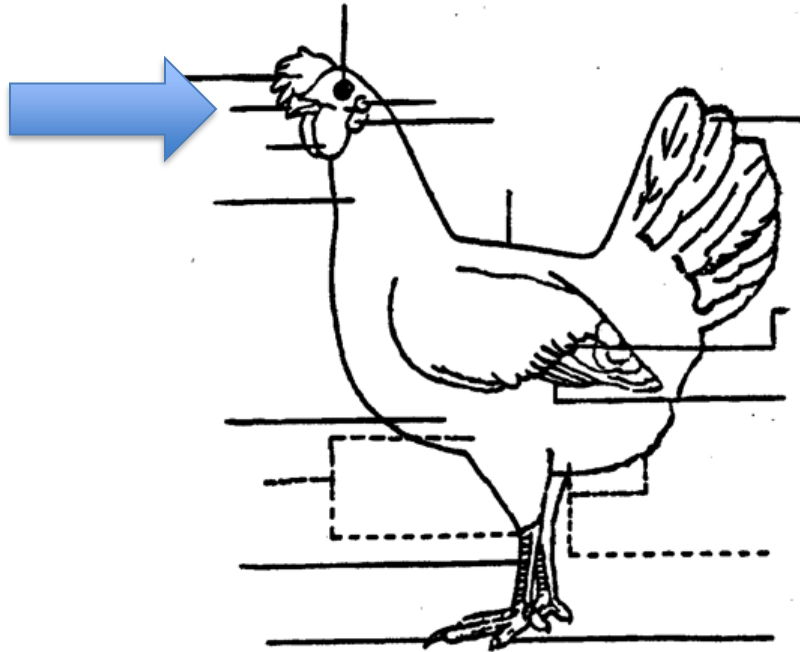
What breed is this?

- A. Orpington
- B. Rhode Island Red

- C. Leg Horn
- D. Wyandotte



## Question 3



What part is this?

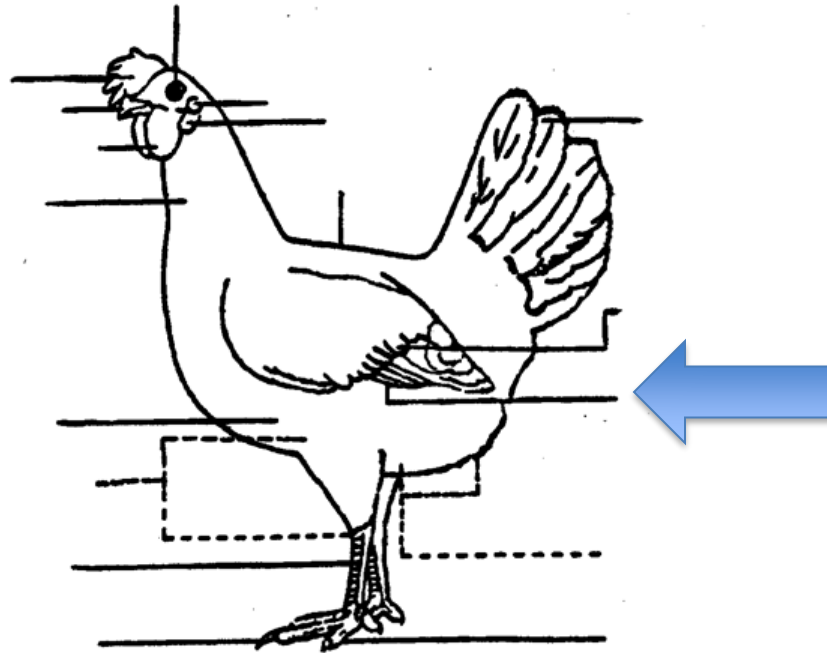
- A. Comb
- B. Eye

- C. Beak
- D. Ear



## Question 4

What part is this?

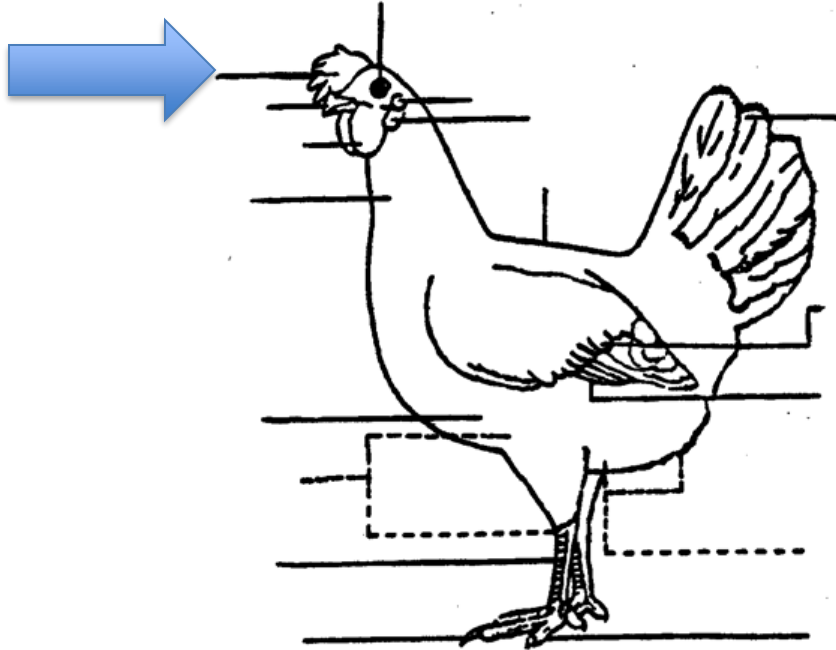


- A. Wing Coverts
- B. Secondaries

- C. Primaries
- D. Tail Feather



## Question 5



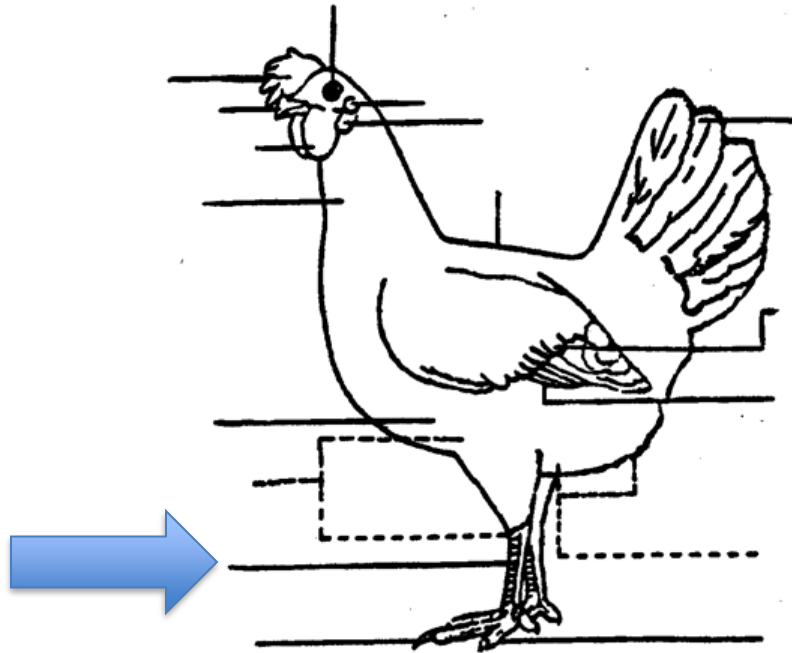
What part is this?

- A. Brush
- B. Comb

- C. Ear
- D. Eye



## Question 6



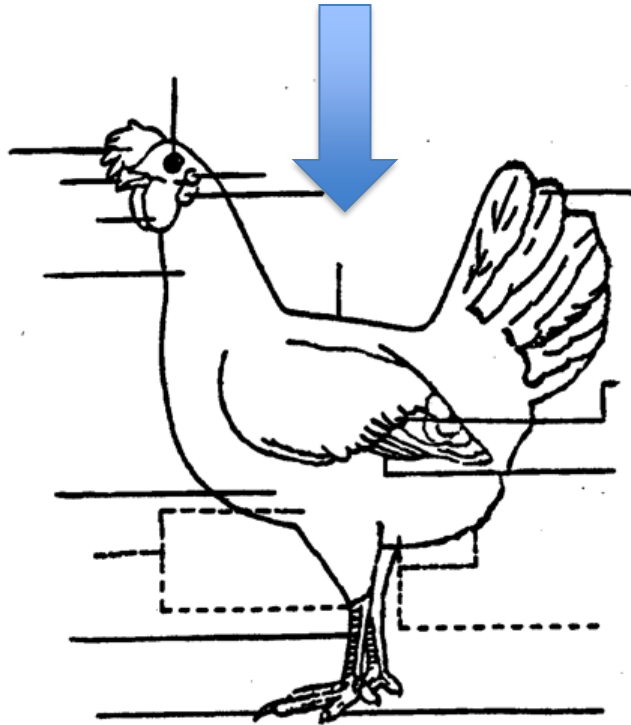
What part is this?

- A. Thigh
- B. Toe

- C. Leg
- D. Shank



## Question 7



What part is this?

- A. Chine
- B. Rump

- C. Loin
- D. Sweep of back





## Question 8



What cut of meat is this?

- A. Leg
- B. Thigh

- C. Wing
- D. Shoulder



## Question 9



What cut of meat is this?

- A. Thigh
- B. Breast

- C. Backstrap
- D. Breast Tenderloin



## Question 10

What internal organ is this?



A. Heart

B. Liver

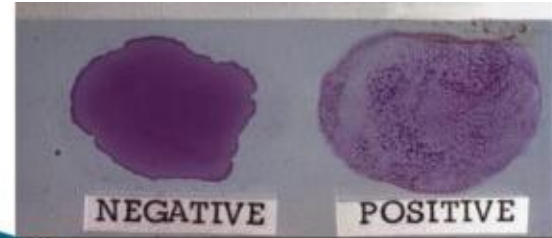
C. Gizzard

D. Lung



## Question 11

By looking at the pictures, what disease are we testing for?



- A. Pseudorabies
- B. BVD

- C. Pullorum
- D. Tetanus



# Question 12

**COUNTRY FEED LAYER MASH**  
 Chicken Layer Feed  
 GUARANTEED ANALYSIS

PROTEIN .....	min .....	17.0%
LYSINE .....	min .....	0.8%
METHIONINE .....	min .....	0.3%
FAT .....	min .....	3.0%
FIBER .....	max .....	2.8%
CALCIUM .....	min .....	2.4%
CALCIUM .....	max .....	2.9%
PHOSPHORUS .....	min .....	0.5%
SALT .....	min .....	0.3%
SALT .....	max .....	0.8%



**INGREDIENTS**

grain products, plant protein products, calcium carbonate, animal protein products, processed grain by-products, salt, monocalcium phosphate, dicalcium phosphate, methionine supplement, vitamin A acetate, D-activated animal sterol (source of vitamin D3), vitamin E supplement, niacin, calcium pantothenate, menadione dimethylprimidinol bisulfite (source of vitamin K activity), riboflavin supplement, folic acid, pyridoxinehydrochloride, vitamin B12 supplement, thiamine mononitrate, ferrous sulfate, cobalt carbonate, zinc oxide, zinc sulfate, ethylenediamine dihydriodide, calcium iodate, copper sulfate, manganous oxide, manganese sulfate, choline chloride, L-lysine, sodium selenite.

This product has been formulated specifically for laying hens and is not intended for other species.

**FEEDING DIRECTIONS:**  
 Feed as the sole ration to laying hens.

100 lb (45.4 kg)

**Country Feed Supply**  
 389 West Kittle Road  
 Mio, Michigan 48647

A. 16%

B. 17%

C. 18%

D. 19%



## Question 13



What is an essential mineral hens need to produce eggs?

A. Calcium

C. Magnesium

B. Zinc

D. Phosphorus



## Question 14

What is the most important thing to provide/feed your animal?

A. Grain

C. Water

B. Hay

D. Bugs





## Question 15

How many eggs does a hen lay per day?



A. 0

B. 1

C. 2

D. 3





## Question 16

What temperature should you keep your brooder when first placing your chicks in it?

A. 99.5-100.5

C. 105-106

B. 92.5-93.5

D. 97-98



## Question 17



What is this breed?

- A. Broad Breasted White
- B. Broad Breasted Bronze

- C. White Holland
- D. Bourbon Red



## Question 18



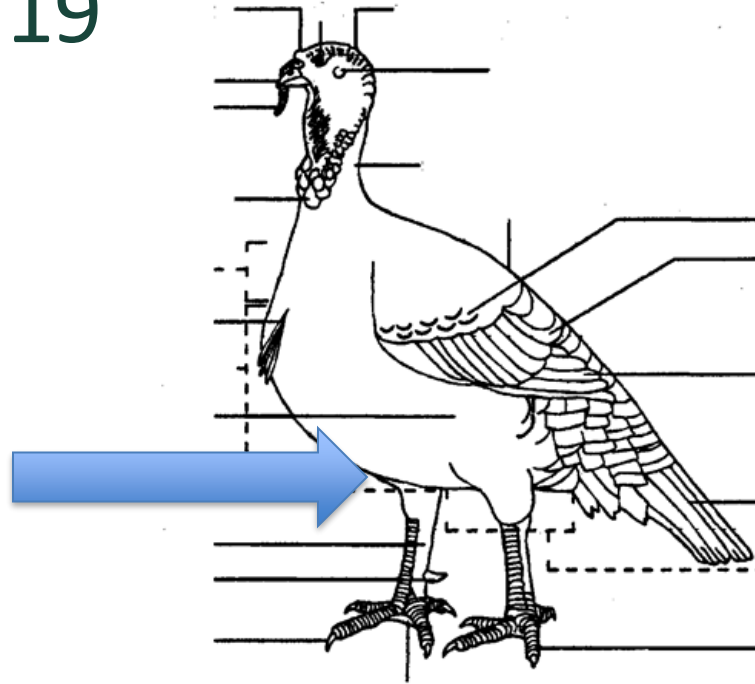
What is  
this breed?

- A. Woodland
- B. Mallard

- C. Pekin
- D. Mighty Duck



## Question 19



What is this part?

- A. Breast
- B. Beard

- C. Keel
- D. Leg



## Question 20

How old should a turkey be to take it to the fair?

A. 10-12 weeks

C. 24-26 weeks

B. 20-22 weeks

D. 16-18 weeks



## Question 21

What is a capon?



- A. Male Goose
- B. Female Turkey

- C. Castrated Rooster
- D. Castrated Duck



# Medication Directions

## Question 22

How long is the withdrawal time?

A. 5 days

B. no withdrawal time

C. 3 days

D. 1 day

*Drug Name* ————— **Carramycin-152** *Active Ingredients*

(oxytetracycline HCl as soluble powder) \_\_\_\_\_

**For control and treatment of specific disease in poultry, cattle, swine, and sheep.** *Species and Animal Class*

CAREFULLY READ ALL DIRECTIONS BEFORE USING THIS PRODUCT.

Soluble Powder for Use in Drinking Water Only.

**Active Ingredients:** Carramycin-152 is a broad-spectrum **antibiotic**. This 4.78 oz packet contains 102.4 grams oxytetracycline HCl (after mixing with clean, fresh water - 512 gallons containing 200 mg oxytetracycline HCl per gallon; 256 gallons containing 400 mg oxytetracycline HCl per gallon; 128 gallons containing 800 mg oxytetracycline HCl per gallon).

*Approved Uses* ————— **Indications:** For control of **poultry** diseases caused by organisms susceptible to oxytetracycline.

**Recommended Dosage**  
Add the following amount to two (2) gallons of fresh, clean water to make the stock solution.  
Mix one (1) ounce of stock solution per one (1) gallon of drinking water.


<i>Dosage</i>		<b>Dosage</b>	<b>Packs/2 Gallons Stock Solution</b>		<i>Route of Administration</i>
}	<b>Chickens</b>	Infectious synovitis	200mg/gal	1/2	
		Chronic respiratory disease	800mg/gal	2	
		Fowl cholera	800mg/gal	2	
	<b>Turkeys</b>	Infectious synovitis	400mg/gal	1	
		Hexamitiasis	200mg/gal	1/2	

*Cautions and Warnings* ————— **Cautions:** 1. Carramycin-152 is for use in flock drinking water only. 2. Medicate continuously at the first clinical signs of disease and continue for 7 to 14 consecutive days. If improvement is not noted within 24 to 48 hours, consult a veterinarian or diagnostic laboratory to determine diagnosis and advice on dosage. 3. Use as sole source of oxytetracycline. Do not use for more than 14 consecutive days in chickens and turkeys or five (5) consecutive days in cattle, sheep, or swine. 4. Carramycin-152 is to be stored below 77° F (25° C). 5. The concentration of drug required in medicated water must be adequate to compensate for variations in age of the animal, feed consumption rate, and the environmental temperature and humidity - each of which affects water consumption. *Storage Requirements*

*Available Sizes* ————— **Warning:** Do not administer to chickens, turkeys, swine, cattle, or sheep within five (5) days of slaughter. Do not administer to chickens or turkeys producing eggs for human consumption. *Withholding Times*

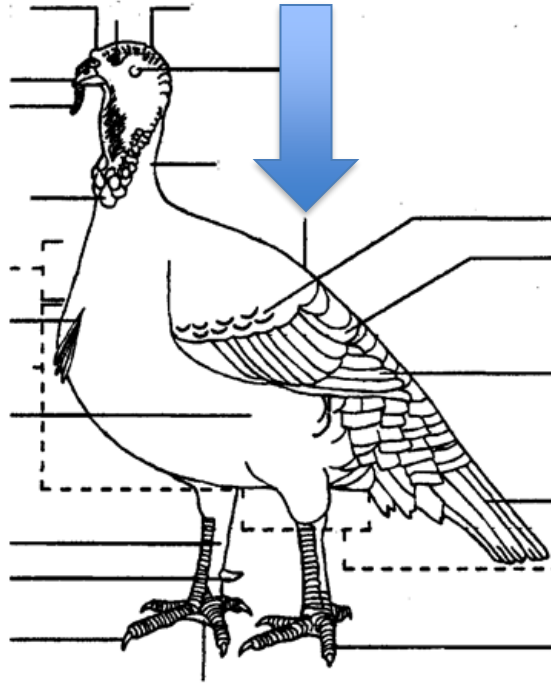
**How Supplied:** Carramycin-152 soluble powder is available in packets of 4.78 oz.

**Livestock Drug - Not For Human Use** Distributed by  
KEEP OUT OF CHILDREN'S REACH **Livestock Health, Inc.**

TAKE TIME  
  
OBSERVE LABEL DIRECTIONS

## Question 23

What is this part?



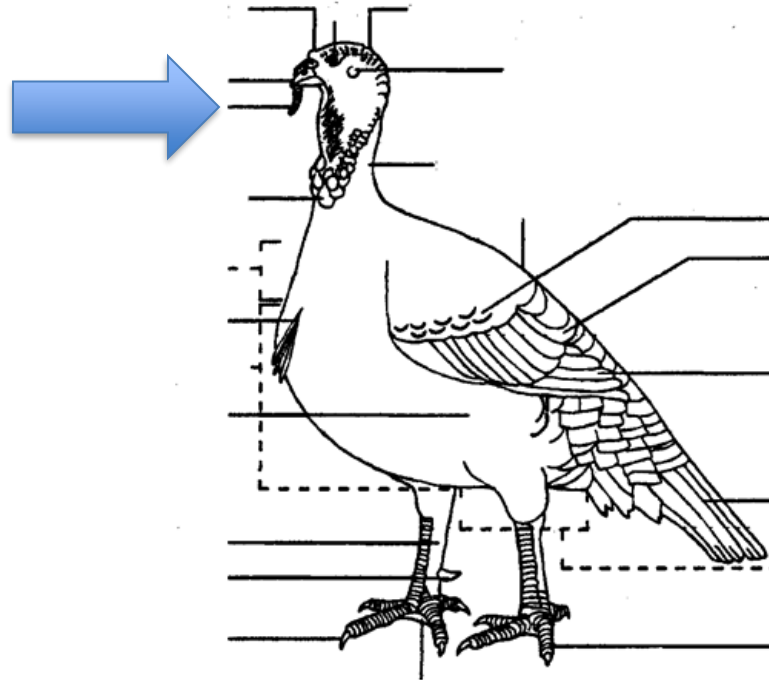
- A. Back
- B. Saddle

- C. Loin
- D. Rump





## Question 24



What part  
is this?

- A. Beek
- B. Ear

- C. Eye
- D. Appendage



## Question 25

A highly [contagious](#) viral disease with up to 100 percent mortality in domestic fowl. Caused by influenza A virus subtypes H5 and H7. All types of birds are susceptible to the virus, but outbreaks occur most often in chickens and turkeys. The infection may be brought by migratory wild birds which can carry the virus, but show no signs of disease. Humans are only rarely affected.

A. Pullorum

C. Bird Flu

B. Avian Influenza

D. Fowl Typhoid



## **Poultry Study Guide Answer Key**

- 1. A**
- 2. B**
- 3. C**
- 4. B**
- 5. B**
- 6. D**
- 7. D**
- 8. B**
- 9. D**
- 10. A**
- 11. C**
- 12. B**
- 13. A**
- 14. C**
- 15. B**
- 16. A**
- 17. B**
- 18. B**
- 19. C**
- 20. D**
- 21. C**
- 22. A**
- 23. B**
- 24. D**
- 25. B**