

WEBBERVILLE DISCOVER NEW ROOTS

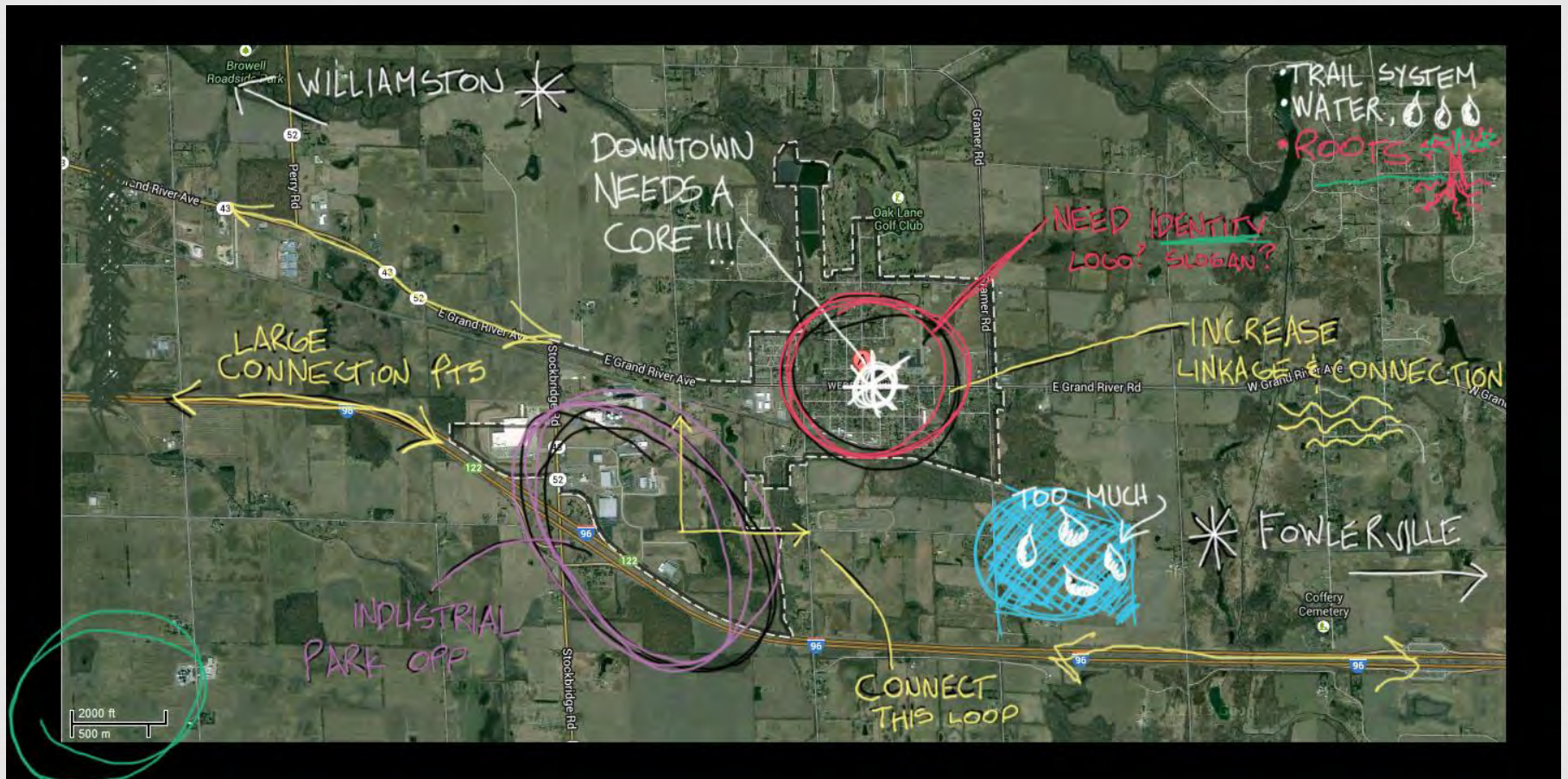
Emily Prieskorn

Marlena Smith

Katie Ling

Inventory and Analysis

- What is Webberville?



Inventory and Analysis

- What is Webberville?
- What could enhance the village?
- What could Webberville become?

From Top:

- School and Church Inventory
- School and Church Analysis
- Neighborhood Inventory
- Neighborhood Analysis

Not to Scale



Inventory and Analysis

- Goals and Objectives: Discover New Roots
 - Connectivity
 - Community focal point
 - Echo and preserve historic character
 - Pedestrian and bicycle focus
 - Green space
 - Attract visitors
 - Stimulate economic growth



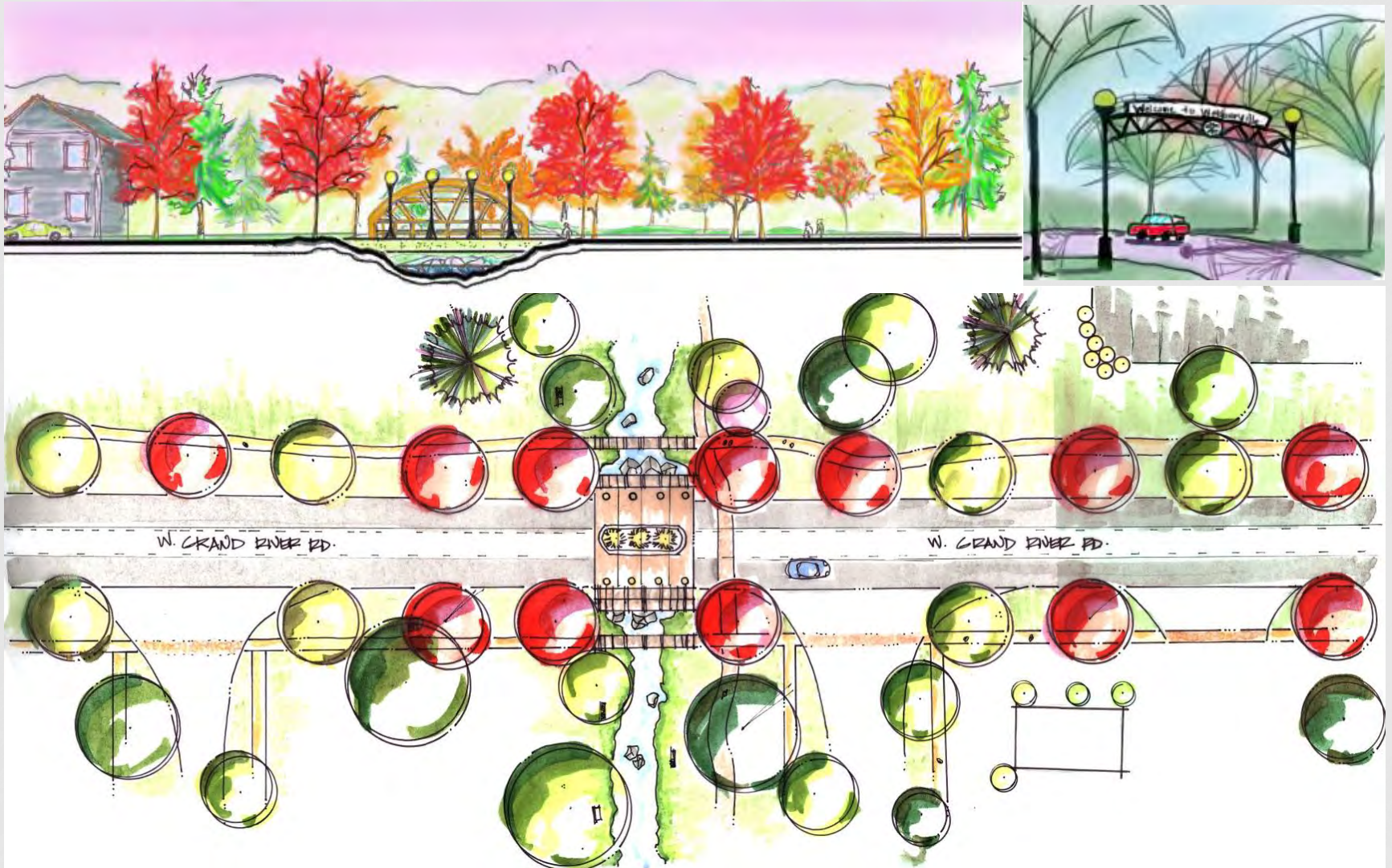
Top Left: Play Equipment Top Right: Streetscape
Bottom: Outdoor Movie

Master Plan



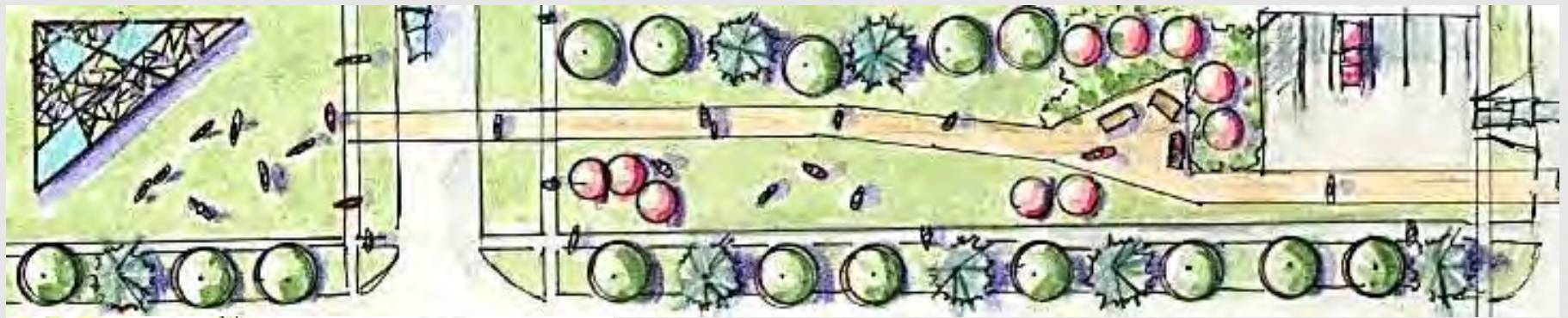
Not to Scale

Gateway bridge/Grand Entrance



Top Left: Bridge Section in Fall Top Right : Gateway Arch Bottom: Plan View Bridge, Not to Scale

Pavilion and Event Space



Top: Plan View Pavilion. Not to Scale Bottom Left: Ice Rink
Bottom Center: Farmer's Market Bottom Right: Outdoor Movie

Benefactor's Ribbon



Left: Benefactor Ribbon
pathway
Right: Brick Paver detail

Streetscapes and Transportation



Right: BRT Transit Shelter

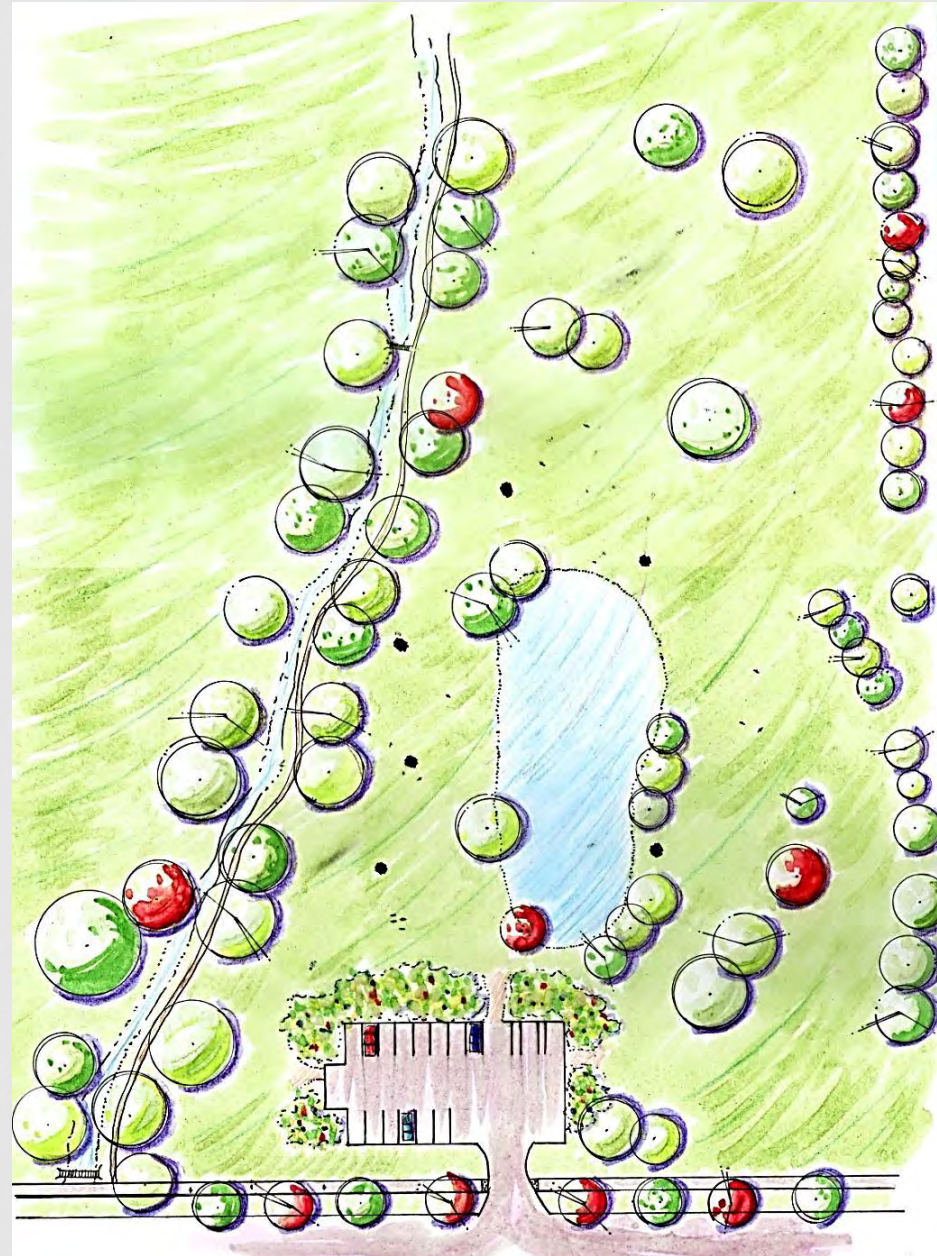
Left: Bike-Share program locking station

Cherry Street Park

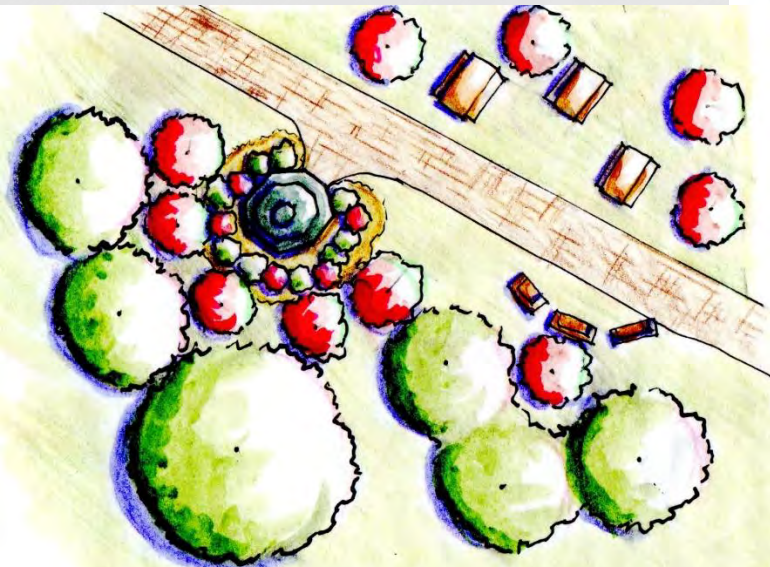


Above: Cherry Street Park Character Sketch

Right: Cherry Street Park Plan view.



Gazebo Park



Gazebo Park Plan View. Right: Gazebo Character Sketch

Tot Lot Art Park

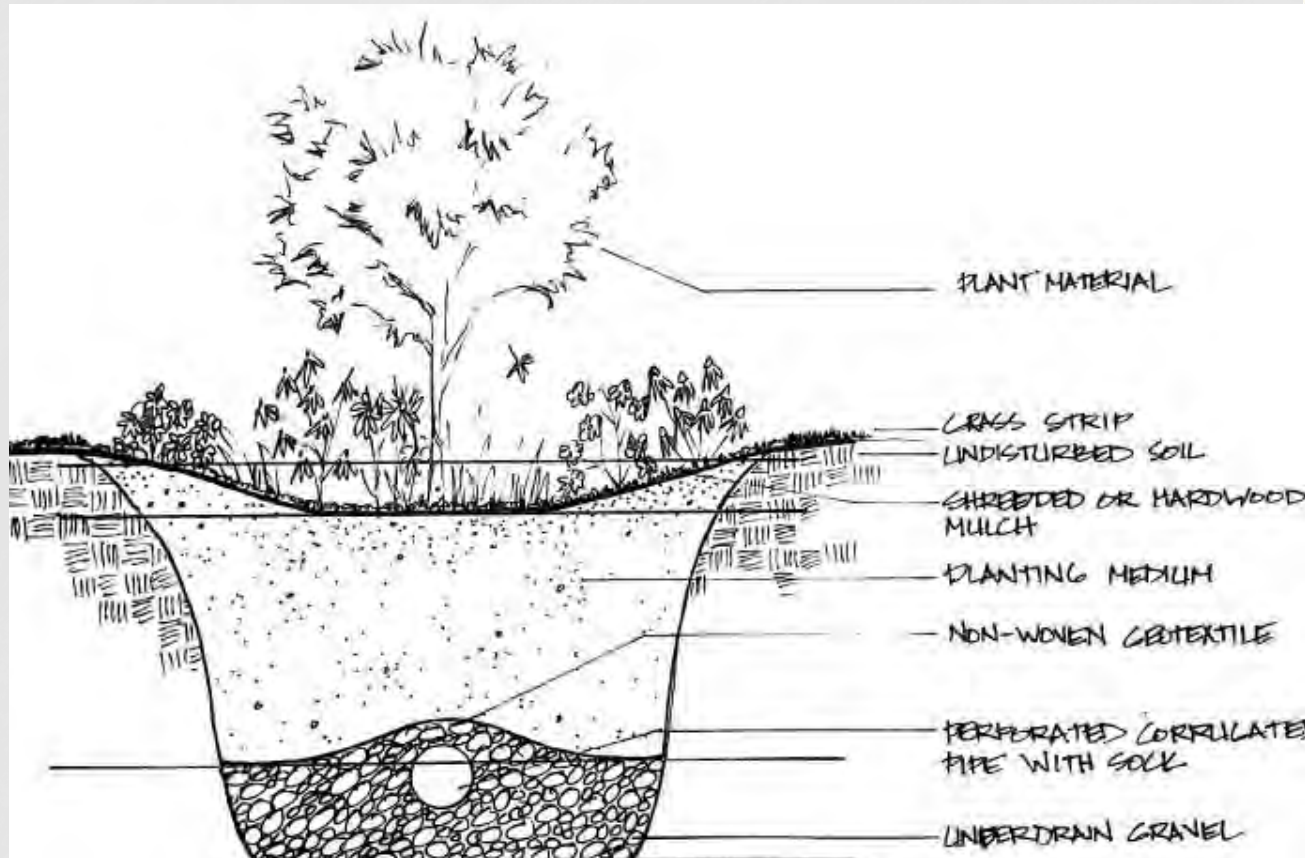


Left: Tot Lot Plan View.

Not to Scale

Right: Steve Tobin
Sculpture, the inspiration
for the play equipment
(photo credit googleimage)

Rain Gardens and Bioswales



Left: Rain Garden Construction Detail. Not to Scale

Top: A rain garden lining a typical sidewalk

Right: Educational signage

Welcome to Webberville

Discover New Roots