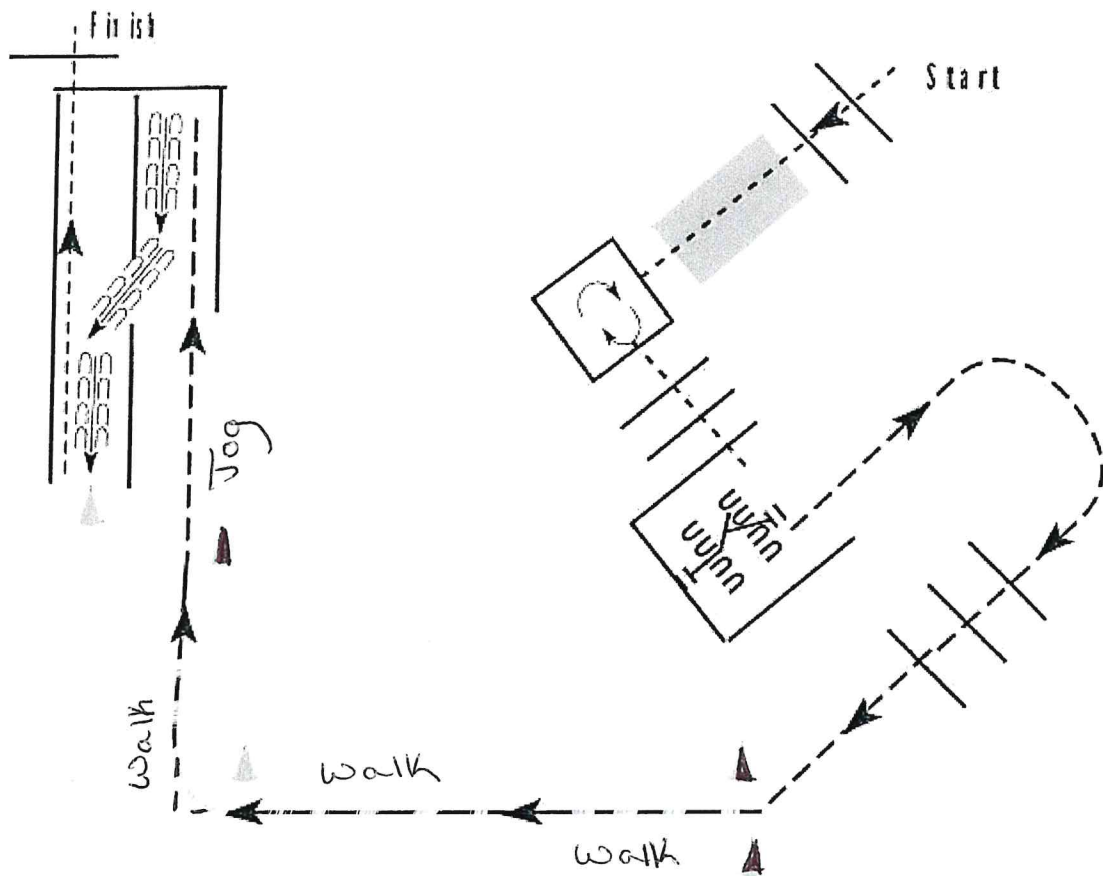


Trail (Walk-Trot)

Show Date:

www.HorseShowPatterns.com

www.HorseShowPatterns.com



1. Walk over poles, over bridge and into box.
2. Turn 3/4 turn to the right in box and walk out over poles and to gate.
3. Work gate with left hand.
4. Jog out of chute and over poles.
5. Break to a walk at the cone
6. Turn a square corner at cone
7. Jog into chute and stop
8. Back the chute then walk out and over final elevated pole.

Walk	-----
Jog	- - - - -
Extended Jog	-----
Lope	—————
Leg Yield	
Lead Change	↘
Back	←○○○
Marker	⊙ B
Sidepass	←→

[T/1-30]

Pattern Provided by:

MIHA

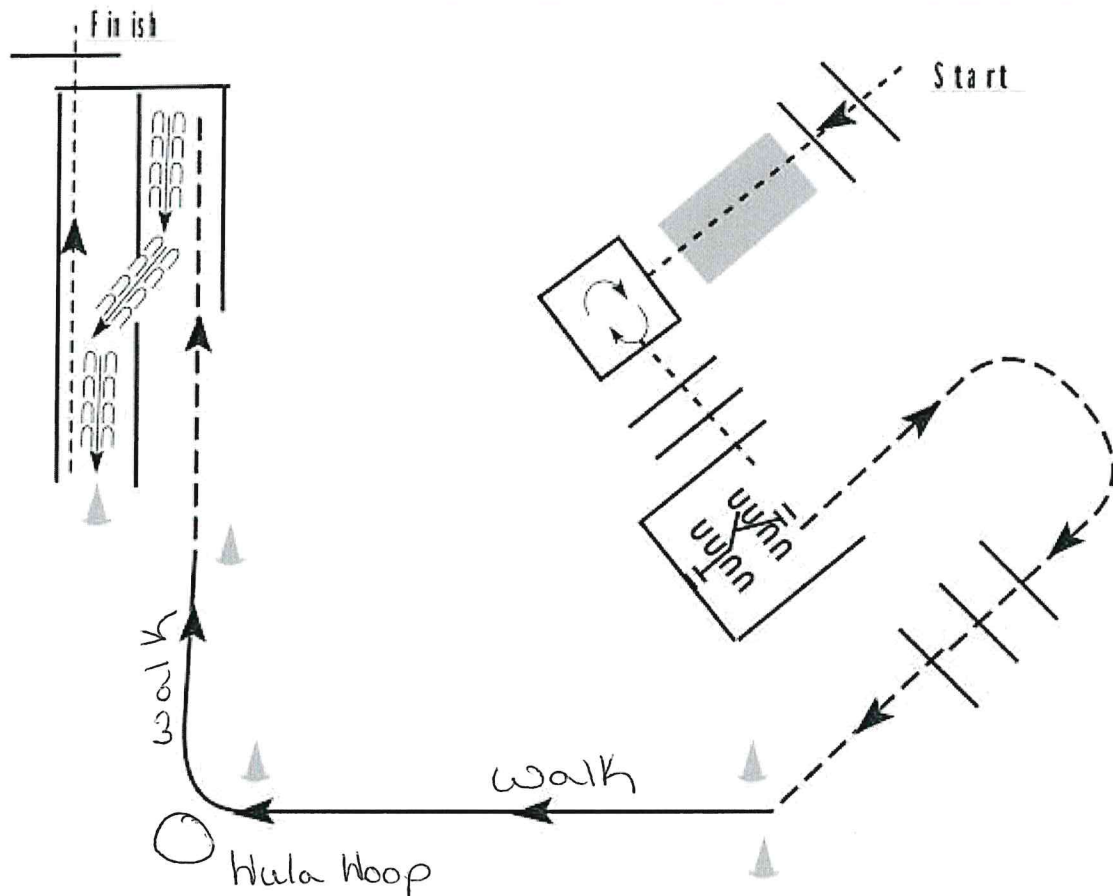
2023 Fair

# Trail (All In-Hand)

Show Date :

www.HorseShowPatterns.com

www.HorseShowPatterns.com



1. Walk over poles, over bridge and into box.
2. Turn 3/4 turn to the right in box and walk out over poles and to gate.
3. Work gate with left hand.
4. Jog out of chute and over poles. to cone
5. Walk to hula hoop and stop with front feet in hoop.
6. Lift hoop over body of mini and set on ground, walk to cone
7. When even with cone, break to a jog and jog into chute. Stop
8. Back the chute then walk out and over final elevated pole.

Walk	.....
Jog	-----
Extended Jog	-----
Lope	————
Back	←←←←←
Marker	ⓑ
Sidepass	←←←←←

[T/1-30]

Pattern Provided by:

## MIHA

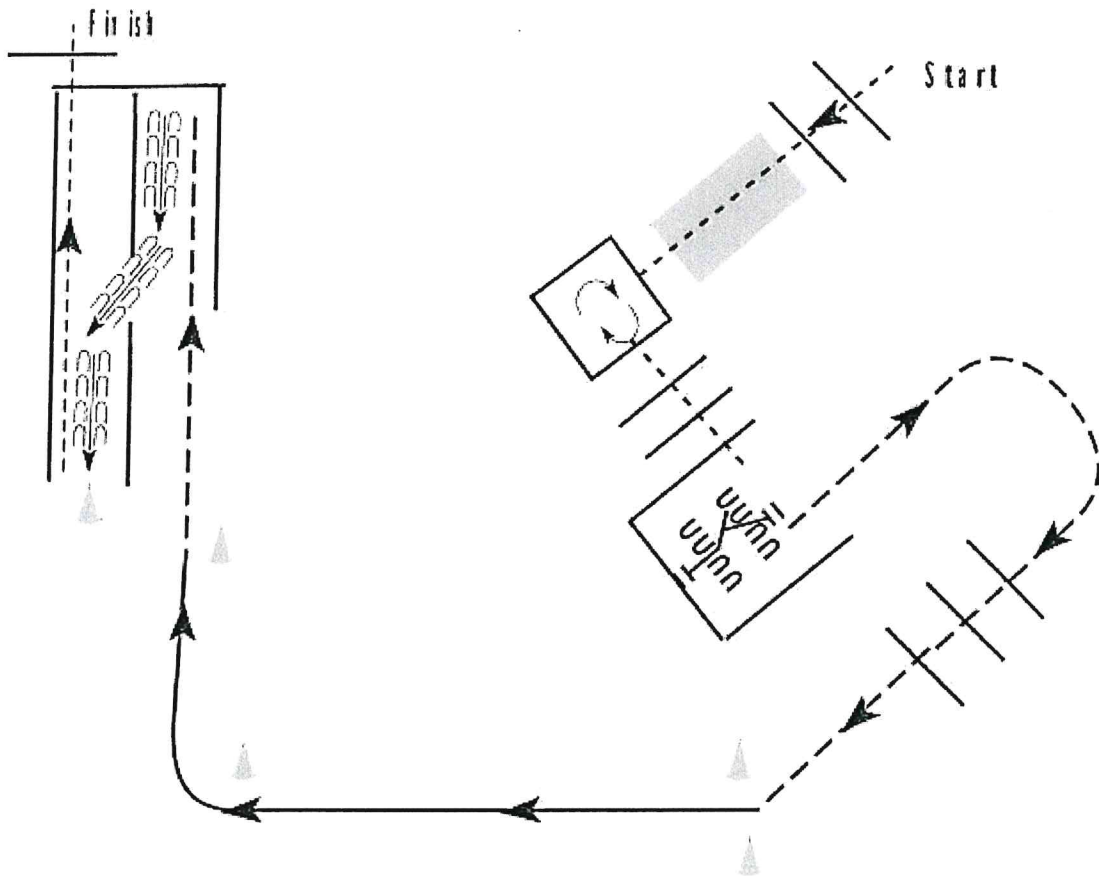
2023 Fair

# Trail (8-14, 15-19)

Show Date :

www.HorseShowPatterns.com

www.HorseShowPatterns.com



1. Walk over poles, over bridge and into box.
2. Turn 3/4 turn to the right in box and walk out over poles and to gate.
3. Work gate with left hand.
4. Jog out of chute and over poles.
5. When between cones, pick up the right lead.
6. Lope on the right lead around cone.
7. When even with cone, break to a jog and jog into chute.
8. Back the chute then walk out and over final elevated pole.

Walk	-----
Jog	.....
Extended Jog	-----
Lope	—————
Leg Yield	
Lead Change	⊞
Back	⊞
Marker	Ⓚ
Sidepass	←-----→

[T/1-30]

Pattern Provided by:

## MIHA