

Michigan Agriculture Environmental Assurance Program

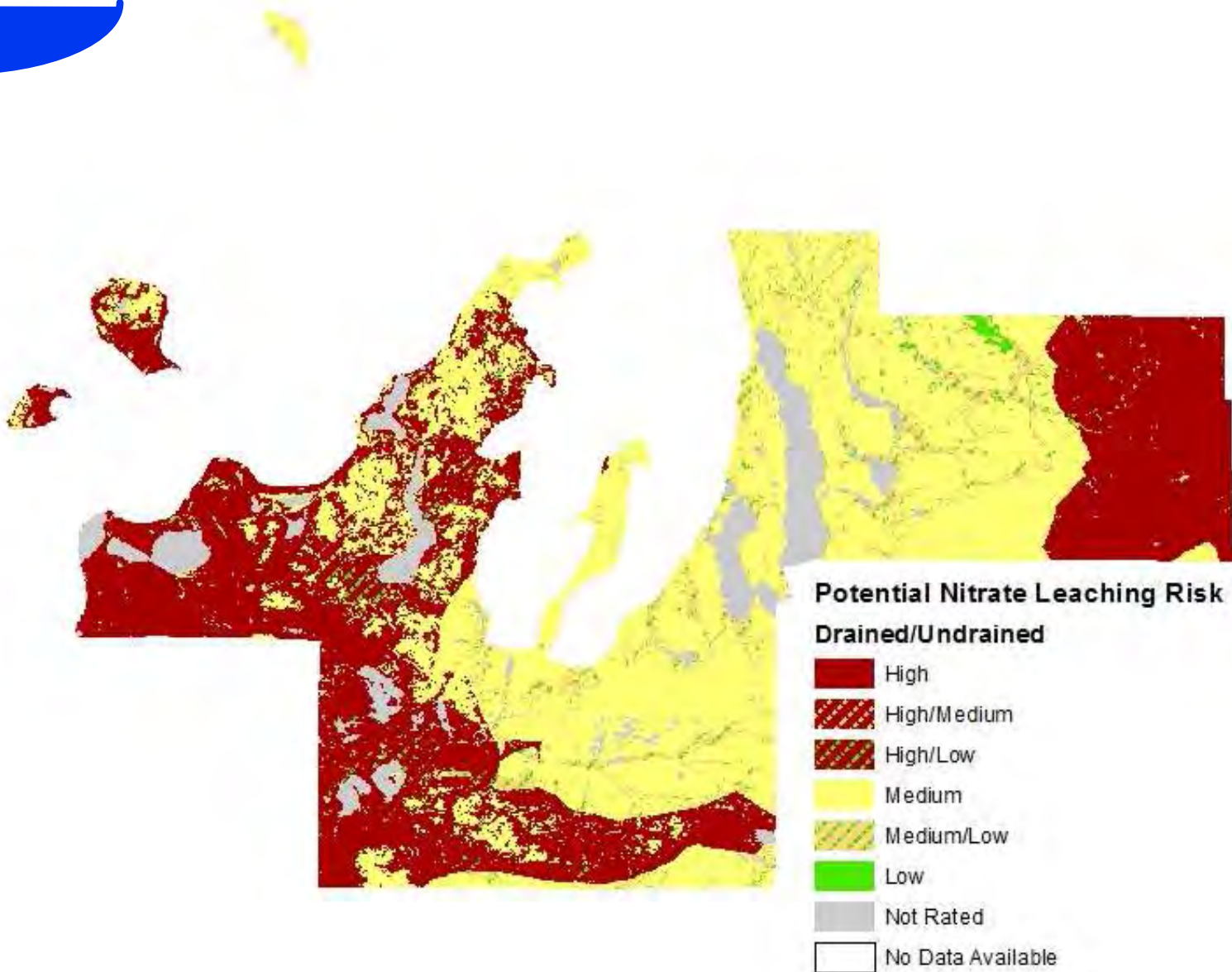








Importance Locally



Potential Nitrate Leaching Risk

Drained/Undrained

- High
- High/Medium
- High/Low
- Medium
- Medium/Low
- Low
- Not Rated
- No Data Available



What is MAEAP?

- MAEAP is a
 - *Voluntary*
 - *Proactive*
 - *Customized*
 - *Cost-effective*



Means of implementing pollution prevention practices and compliance with environmental regulations.



- **Regulatory discretion**
- **RUP Credits**
 - Initial Assessment, Verification, and Repeat Assessment and Re-verification.

MAEAP a look at the legislation

In March 2011, Governor Rick Snyder signed two bills related to MAEAP. Read below to learn what the legislation accomplished for Michigan's farmers. Regulatory incentives for all MAEAP verified farms include:

- ❖ If a farm is MAEAP verified and has an accidental discharge and the farmer performs due diligence in notifying and addressing the spill, the farm will only be responsible for natural resource damage and not civil fines and penalties. The farm's discharge history will be taken into account.
- ❖ If a MAEAP verified farm is following its verified land application practices and an unpredicted, significant rainfall event causes a discharge to the waters of the state, the precipitation is considered an "Act of God Weather Event" and the discharge will be considered "nonpoint source pollution." In this case the only action that can take place is the adoption of 'environmentally sound and economically feasible conservation or management practices' provided by the farm in order to avoid future discharges.
- ❖ If a farm is MAEAP verified in all applicable "systems" and is in a Total Maximum Daily Load (TMDL) Watershed, the farm will be considered as implementing the practices needed to meet a TMDL. All farms, regardless of size or type of operation, that achieve MAEAP verification and follow MAEAP standards are allowed these incentives.

To learn how to get started with MAEAP, contact your local conservation district or by visiting www.maeadp.org



MAEAP RUP credits

Michigan farmers who have achieved verification in the Farmstead or Cropping Systems through MAEAP will be eligible for eight core pesticide applicator re-certification credits. Re-verified Cropping or Farmstead Systems, completed three or more years after the initial verification, will be eligible for four core pesticide applicator re-certification credits. The MAEAP verification pesticide applicator re-certification credits are available for Systems verified after January 1, 2012.

RUP Core Credits

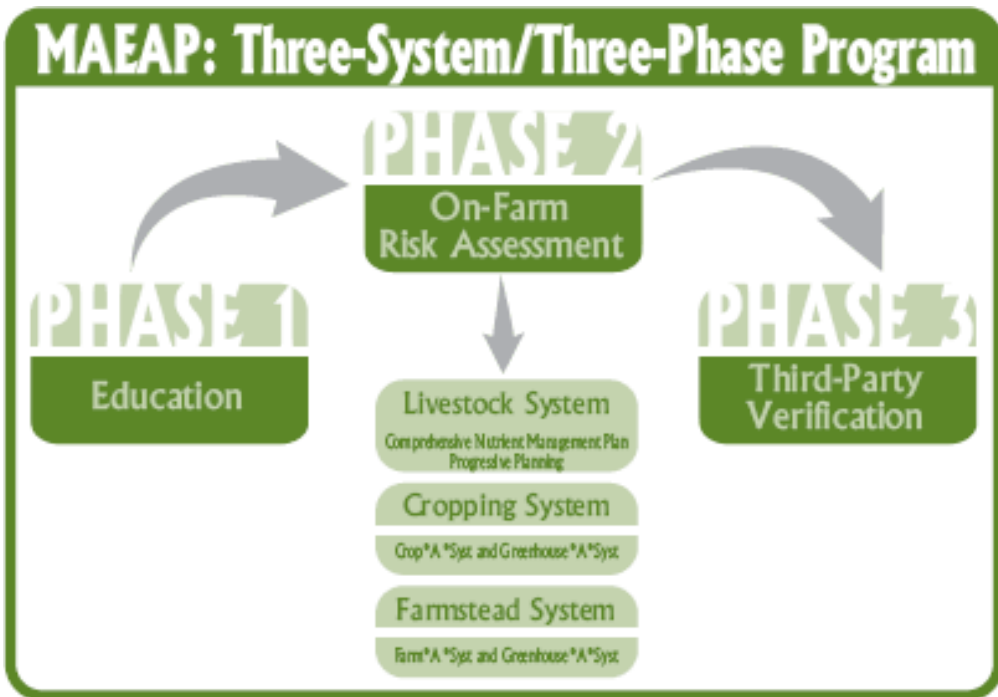
	Initial Assessment/ Verification	Repeat Assessment/ Re-verification
MAEAP Farm*A*Syst	4	2
MAEAP Crop*A*Syst	4	2
MAEAP System Verification	8	4

For additional information on pesticide applicator re-certification credits and other producer incentives for MAEAP verification, farmers are encouraged to contact their MAEAP technician. MAEAP technicians are housed at local conservation district offices. To find your local office go to <http://maeadp.org>. For information about MAEAP visit www.maeadp.org





Steps to MAEAP Verification



Grand Traverse Conservation District



Look for this symbol and discover your connection to local farmers.



What does MAEAP Verification mean?
 Farmers displaying the MAEAP logo are actively sustaining the landscapes that surround us – the water we drink, the air we breathe, and the lakes and streams we recreate in – while producing top-quality Michigan-grown agricultural products.

MAEAP Verification assures farmers they are truly doing the right thing for the land they love by preserving its integrity for future generations.

When you purchase food from a MAEAP Verified farm you are demonstrating your support for local farmers who voluntarily adopt environmentally sound growing practices.

So keep an eye out for the MAEAP logo and join your local farmers in doing your part to tread lightly upon our land and water.

Learn more:
 Explore Northwest Michigan



The Michigan Agriculture Environmental Assurance Program is an initiative of the Michigan Department of Agriculture and Rural Development and is administered locally by the Grand Traverse Conservation District.





Risk Assessment Example

Pesticide Storage and Handling (continued)					
Risk question	Low risk - 3 (recommended)	Medium risk - 2 (potential hazard)	High risk - 1 (significant hazard)	Your risk	Records or evidence for MAEAP verification
3.05) What design features does the pesticide storage have to contain spills and leaks?	Impermeable floor surface does not allow spills to soak into soil. Curb installed on floor to contain leaks and spills or individual package containment.	Impermeable floor surface without curb.	Permeable floor surface (wood, gravel or dirt floor) or impermeable floor with cracks. Spills could contaminate soil. Drain in the floor that discharges to the environment. ⁴		Adequate secondary containment for pesticide storage.
3.06) What type of pesticide storage shelving is used?	Metal or plastic shelving with shelf lips to prevent containers from falling. And, Dry formulation are stored on upper shelves and liquids on lower shelves.	Metal or plastic shelves without lips. Or, Wood shelves, covered with epoxy paint or plastic liner.	Bare wood shelving without lips. Or, No shelves – pesticide containers are on the floor where they may be damaged.		
3.07) What level of security is provided for the pesticide storage?	Fenced or locked area, secure from unauthorized access. Storage separate from all other activities.	Storage open to activities that could damage containers or spill chemicals.	Open access to pesticide storage could result in theft, vandalism, and injury to children, pets or wildlife. ²⁰		Adequate pesticide storage security.
3.08) What signage is posted on the storage facility?	A highly visible, weather-proof sign indicates that pesticides are stored there. A "No Smoking" sign is also posted.	Pesticide storage sign is posted, but "No Smoking" is not posted.	The pesticide storage has no signs.		Pesticide storage signage present.
3.09) What kind of spill kit is available at the pesticide storage?	A complete spill kit is immediately available. A fire extinguisher approved for chemical fires is easily accessible and usable.	Spill kit is immediately available, but no fire extinguisher.	A spill kit is not available. ¹⁶ A fire extinguisher is not available.		Spill kit with fire extinguisher present at pesticide storage.
3.10) What total quantities of pesticides are stored on the farm?	No pesticides stored at any time, or only seasonal use storage.	1 gallon to 10 pounds of each pesticide in long-term storage.	More than 55 gallons or more than 550 pounds of each pesticide in long-term storage. ¹⁷		

⁴ Producers who store certain bulk pesticides in containers that exceed 10 gallons or 100 pounds capacity may be subject to additional regulations.⁴

A boxed risk level indicates the level required for MAEAP environmental assurance verification. **Bold print** indicates a violation of state or federal regulation. **Blue print (bold italic)** indicates conformance with Right-to-Farm guidelines.



Steps to MAEAP Verification

- **When ready, farmer contacts MAEAP Technician and MDARD to schedule a farm visit for MAEAP Verification.**
- **Verified farms are required to go through a review by MDARD every three years to ensure continued compliance with MAEAP standards as well as Right to Farm and State & Federal Laws.**

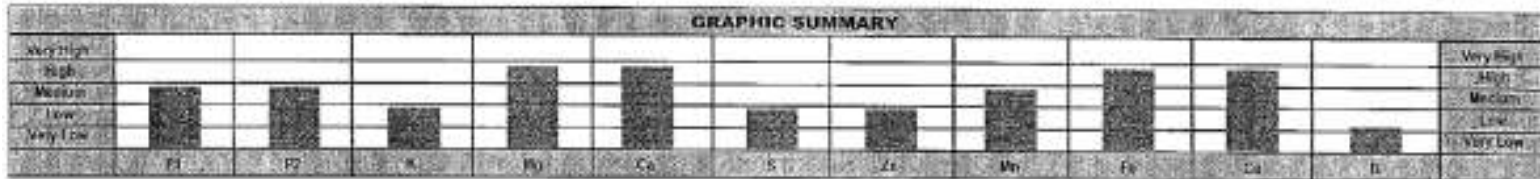




Grower Efforts

- **Soil Testing**
 - Customized Nutrient Plans
 - Covering 212,822 acres

SOIL TEST RESULTS														
Organic Matter %	Phosphorus		Potassium K ppm	Magnesium Mg ppm	Calcium Ca ppm	Sulfur S ppm	pH		CFC mg/100g	% N	% Mg	% Ca	% H	% Na
	Bray-1 Equiv ppm	Bray P2 ppm					Soil	Buffer						
1.1	29	33	39	85	500		6.6	7.0	3.3	3.0	21.4	75.6		
Sulfur S ppm	Zinc Zn ppm	Manganese Mn ppm	Iron Fe ppm	Copper Cu ppm	Boron B ppm	Sulfate Sulfate ppm	Nitrate NO3-N ppm	Ammonium NH4-N ppm	Phosphorus P ppm	Chloride Cl ppm			Ammonium NH4-N ppm	
5	2.0	17	24	2.6	0.2									



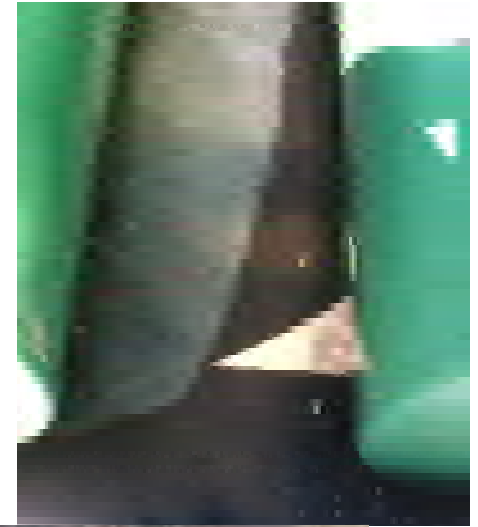
SOIL FERTILITY RECOMMENDATIONS														
Intended Crop	Yield Goal	Row/acre Crop	Lime Tons/A	Nitrogen N lbs/A	Phosphate P2O5 lbs/A	Potash K2O lbs/A	Magnesium Mg lbs/A	Sulfur S lbs/A	Zinc Zn lbs/A	Manganese Mn lbs/A	Iron Fe lbs/A	Copper Cu lbs/A	Boron B lbs/A	
Cherries		Cherries	0.0	65	55	140	0	10	2.5	4	0	0	2.0	

- **Equipment Calibration**
 - Banded Applications
 - Variable Rate Technology



Grower Efforts

- **Emergency planning**
 - Plan of action in the event of a spill
 - Protect your local firefighters
- **Farmstead Site Reviews**
 - Identify Potential Risks





Grower Efforts

- **Secondary Containment**
 - All scales





Verified Farms

- **Farmers who have achieved MAEAP verification have worked with a technician from their local Conservation District to:**
 - Review all of the management practices of their farm.
 - Gain improved access to technical assistance
 - Voluntarily adopt environmentally sound management practices.





Verified Farms





Environmental Outcomes

- **Sediment Reduction**
 - 322,231 tons or 28,642 dump trucks
- **Phosphorus Reduction**
 - 261 tons or 138,056 tons of algae
- **Nitrogen Reduction**
 - 641 tons or 45,515 tons of algae





Marketing Opportunities With MAEAP

- Beneficial for farm markets and direct customer sales.
- Displaying the MAEAP logo is a sign of integrity.
- Consumers are seeking healthy and fresh local food.
- Verification in two systems allows for usage of the MAEAP logo on farm marketing/promotional materials
- Allows consumers to identify good stewards of the land.
- Consumer awareness and demand.
- Statewide and national recognition (MAEAP educational winery tours).

A sign of integrity.

MAEAP-verified farms keep their land, water and air as healthy as the food they produce. They represent the highest standards of environmental stewardship and the pinnacle of responsible agriculture.



Look for MAEAP signs at the local farms and markets you visit, and talk with the farmers. They're experts at producing safe, healthy, nutritious foods for you and your family, while caring for the environment that makes their livelihood possible.



Michigan Agriculture
Environmental Assurance
Program
www.maeap.org



Community Awareness

FGN

June 2013
Volume 52
Number 6

FRUIT GROWERS NEWS

Inside

Start preparing for Obamacare..... pg. 12
Brush up on youth labor laws..... pg. 16
Report on honeybee declines..... pg. 19
Agritainment insurance claims..... pg. 30

Vineyards verified as responsible stewards

By Greg Allen, Michigan Editor

Vineyard owners in Michigan's southern and western wine regions were recognized recently by Gov. Rick Warren and agencies involved in administering the program.

In recognition from the Michigan Department of Agriculture and Rural Development (MDARD) and the Grand Traverse Conservation District's Patrick Soper at a media event April 30 to recognize the participating wineries and vineyards in Old Mission Peninsula near Traverse City, Mich., for becoming verified in the Michigan Agritourism Environmental Assistance Program (MAEAP). Through the verification

process, the vineyards are formalized industry and provide pollution prevention practices.

"As part of the proactive environmental steps these award-winning wineries and vineyards on Old Mission Peninsula have taken to become MAEAP verified," said Soper during the gathering held at Beez Vine Vineyard and Winery. "The actions of these growers speak to their ongoing commitment to responsible on-farm practices, and its importance, regardless of the location, size or what commodity your farm produces."

MAEAP is a collaborative effort of MDARD, Michigan Farm Bureau, commodity organizations,

See **STEWARDS**, page 11

Photo: Steve Cote, vineyard and winery. A representative of Beez Vine Vineyard and Winery in Traverse City, Mich.

Are Chinese apples the biggest threat?

By Matt Wilkerson, Managing Editor

For a long time, John Park – vice president of Riverbank USA, an apple grower and packer based in Gardners, Pa. – was a strong proponent of keeping fresh Chinese apples out of the United States. His main concern was the threat of new pests and diseases showing up in U.S. orchards.

Over the last several years, however, Park's position has shifted. His changing attitudes were based on a shift among many in the U.S. apple industry.

For one thing, China has been putting a lot of pressure on the U.S. government to open the U.S. market to Chinese fresh apples, and the industry agrees to be veritable, like said,

Photo: Courtney Baez
Apples in China are bagged in the trees to protect them from weather, sun and pests.

"We are going to keep Chinese apples out of the American market indefinitely," he said.

U.S. apple growers like it or not, it might be time to seek something in common, something they don't know right now – like full export access to the Chinese market. A growing list of size and volume, while the United States will open its borders to Chinese apples for U.S. apple growers will get nothing if they:

– Demand that a large number of apple growers in the eastern United States, Washington, East and the normal circumstances, Washington this grow

See **APPLES**, page 10



GTCD Team MAEAP
@Team_MAEAP

Congrats Evans Bros! Hard at work in #benziecounty @onetoughnerd #PureMichigan pic.twitter.com/00jtOrYQkg

3:17 PM · 27 Jun 13





American Waste Container Recycling

- No fee: “Farm*A*Syst”
- Take back anytime
- Triple-rinsed, no labels





Permanently Protected Farmland - NW Lower Michigan

2011

LEELANAU LAND CONSERVANCY
 Our mission: protecting significant natural, scenic and farm lands and advancing land stewardship - now and for future generations.
 Dr. Jeffrey Kalkbrenner, Director
 Board: Howard, and Associates of Coopers

LEELANAU CONSERVANCY
 Our mission: to conserve the land, water, and scenic character of Leelanau County.



Total Protected Farmland Northwest Lower Michigan

- Leelanau Conservancy Protected (2,350 acres)
- Township (Peninsula and Acme) (3,400 acres)
- GTRLC Protected Farmland (1,640 acres)

Total = 7,400 acres of Farmland Protected !!

Note: all of the parcels shown are private lands and are not open to the public.





Farmability

- **FarmAbility Program**

- Partnership with GTRLC & MSU
- Simplified PA 116
- 10 year, temporary Conservation Easement
- Modest incentives
- Resources for Estate, Succession, & Business Planning
- Assistance for Food Safety/MAEAP
- 5,000 Acre Goal

- Whitewater

- Elk Rapids

- Milton

- Torch Lake



**Grand Traverse
Conservation District**



More Info

- www.maeap.org
- www.natureiscalling.org
- Jessica Rasch
231.941.0960 x23
jrasch@gtcd.org
- Garrett Coggon
231.941.0960 x22
gcoggon@gtcd.org



MICHIGAN AGRICULTURE ENVIRONMENTAL ASSURANCE PROGRAM WATER STEWARDSHIP TECHNICIANS FY2013



1	Alegan CD vacant 269.673.8965 x 3	19	Lerouine CD Arny Gilhouse 517.262.7400 x 5
2	Alpena CD Randy Melberg 989.365.3995 x 3	20	Mason-Lake CD Murray Stall 231.757.3708 x 3
3	Berrien CD Suzanne Forsyth 269.471.6111 x 121	21	Mecosta CD Anthony Wermette 231.796.0909 x 3
4	Branch CD Mike Celske 517.278.8008 x 5	22	Missaukee CD Jodi Vanema 231.829.7193
5	Calhoun CD Sharon Williams 269.781.4987 x 5	23	Monroe CD Tim Kwiatkowski 734.241.7755 x 3
6	Charlevoix CD Chris Anderson 231.582.6193	24	Newaygo CD Lucas Coffin 231.504.2420 x 5
7	Crisp-Luce-Mack CD Michelle Jarvis 516.535.1778	25	Oceana CD Lynda Hamerns 231.861.4967 x 3
8	Clinton CD John Swidar 989.224.3720 x 3	26	Ogemaw CD Janise Jacques 989.343.0923
9	Delta CD Wally Wenschik 989.429.9459 x122	27	Oscoda - Lake CD Tasha VanOssen 231.852.2950 x 3
10	Eaton CD Jennifer Silveri 517.543.5945 x 5	28	Otsego CD Rob Stein 616.846.8770 x 5
11	Genoa-Traverse CD Janice Reed & David Coggon 231.941.0966	29	Saginaw CD Karilyn Keef 989.751.4077 x 4
12	Hillsdale CD Shelby Bolwahn 517.849.9690	30	Sanilac CD Kyle McCarty 810.648.2115 x 4
13	Huron CD Tom Harselman 989.269.9540 x 3	31	Shawassee CD Tom Wert & Jay Korson 989.723.9553 x 3
14	Ionia CD Rachel Koleita 616.527.2620 x 101	32	Tuscola CD Steve Schuller 989.673.8174 x 3
15	Isabella CD Kari Womersle 989.772.9152 x 3	33	Van Buren CD Kyle Mead 269.657.4030 x 5
16	Kalamazoo CD Linda Zales 269.327.1255 x 4	34	Van Buren CD Jusley Doi 269.657.4030 x 5
17	Kalamazoo CD Earl Krom 616.942.4111 x 100		SE MI Greenhouses Jackson CD Dean Krauskopf
18	Lapeer CD Erik Palm 510.684.3941 x 3		

