

## Phyllosticta leaf spot, fruit rot, and berry speckle

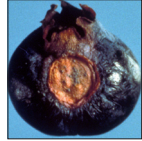
*Phyllosticta vaccinii*, *P. elongata* (fungi)

This relatively rare disease occurs in the eastern United States.

**Symptoms.** Leaf spots are brown and circular with darker margins. Fruit lesions are circular, brown to gray, hard, and slightly depressed. Pycnidia may be visible as small, black pimples in leaf as well as fruit lesions. A hard, dry rot appears on green as well as ripe fruit. Symptomless fruit may become speckled and rot in storage.



Fla. Dpt. Ag. Con. Sv., Bugwood.org



**Disease cycle.** The two fungal species involved in this disease also attack cranberries. Both produce rain-splash dispersed conidia. Not much is known about the life history of these fungi.

**Management.** Avoid susceptible cultivars; limit overhead irrigation; apply effective fungicides.